

UC Irvine

Clinical Practice and Cases in Emergency Medicine

Title

Infant with Groin Swelling

Permalink

<https://escholarship.org/uc/item/12j1m5wg>

Journal

Clinical Practice and Cases in Emergency Medicine, 6(3)

Authors

Polavarapu, Nisha
Kilbane, Brendan

Publication Date

2022

DOI

10.5811/cpcem2022.6.56426

Copyright Information

Copyright 2022 by the author(s). This work is made available under the terms of a Creative Commons Attribution License, available at <https://creativecommons.org/licenses/by/4.0/>

Peer reviewed

Infant with Groin Swelling

Nisha Polavarapu, MD*
Brendan Kilbane, MD†

*Hackensack Meridian School of Medicine, Hackensack University Medical Center, Department of Pediatric Emergency Medicine, Hackensack, New Jersey
†Rainbow Babies and Children's Hospital, Department of Pediatric Emergency Medicine, Cleveland, Ohio

Section Editor: Jacqueline Le, MD

Submission History: Submitted February 14, 2022; Revision received June 3, 2022; Accepted June 9, 2022

Electronically published August 8, 2022

Full text available through open access at http://escholarship.org/uc/uciem_cpccem

DOI: 10.5811/cpcem2022.6.56426.

Case Presentation: A 21-day-old female presented to the pediatric emergency department with swelling of the left groin. Physical examination revealed a soft, nontender abdomen and a two-centimeter firm and fixed mass on the left aspect of her mons pubis. Point-of-care ultrasound revealed a left inguinal hernia with incarcerated ovary.

Discussion: Inguinal hernias are common in the pediatric population. In female patients, particularly those less than one year old, inguinal hernias most frequently contain an ovary rather than bowel; so they require careful evaluation to protect future reproductive function. [Clin Pract Cases Emerg Med. 2022;6(3):264-265.]

Keywords: *hernia; groin; ovary; infant; ultrasound.*

CASE PRESENTATION

A 21-day-old female presented to the pediatric emergency department with swelling of the left groin, which was first noticed while her family changed her diaper the morning of presentation. They denied any redness or warmth over the site but felt that she was fussier than normal overnight. They reported that she fed normally that morning and had her normal number of wet diapers. The patient was otherwise healthy and born at 37 weeks gestation without complications. On physical examination, the patient was well appearing with a soft, nontender abdomen and an irreducible two-centimeter (cm) firm and fixed mass on the left aspect of her mons pubis that was tender to palpation.

A point-of-care ultrasound was performed and showed a two-cm mass with follicles. A confirmatory formal ultrasound was subsequently obtained, which showed a 2.1 x 1.1 x 2.1 cm mass in the left perineal region with subcentimeter follicles and flow demonstration, which confirmed the diagnosis of an inguinal hernia with incarcerated ovary (Images 1-3). Pediatric surgery was consulted, and the patient was taken to the operating room for left inguinal hernia repair with reduction of an incarcerated ovary.

DISCUSSION

Inguinal hernias in the pediatric population are more commonly seen in premature infants, in male infants, and in

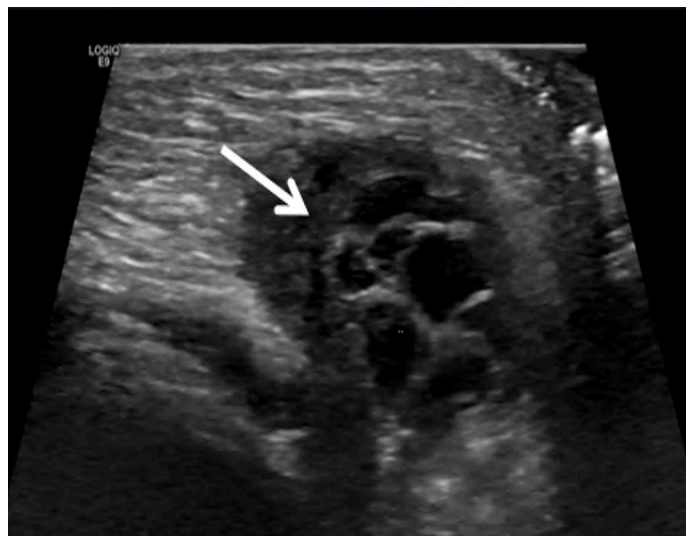


Image 1. Ultrasonography (transverse view) showing an incarcerated ovary (arrow) within an inguinal hernia.

those less than one year old.¹ In female patients, particularly those less than a year old, inguinal hernias most frequently contain an ovary rather than bowel; so they require careful evaluation to protect future reproductive function.² Prompt ultrasound is important in females if the mass is not easily

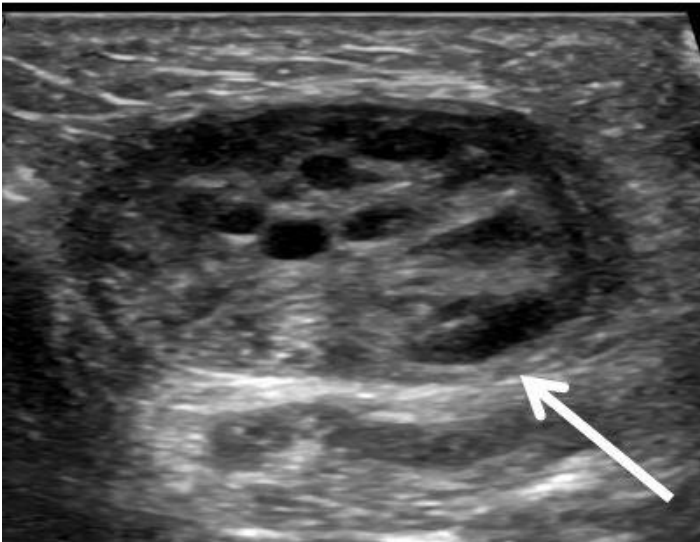


Image 2. Ultrasonography (sagittal view) showing an incarcerated ovary (arrow) within an inguinal hernia.

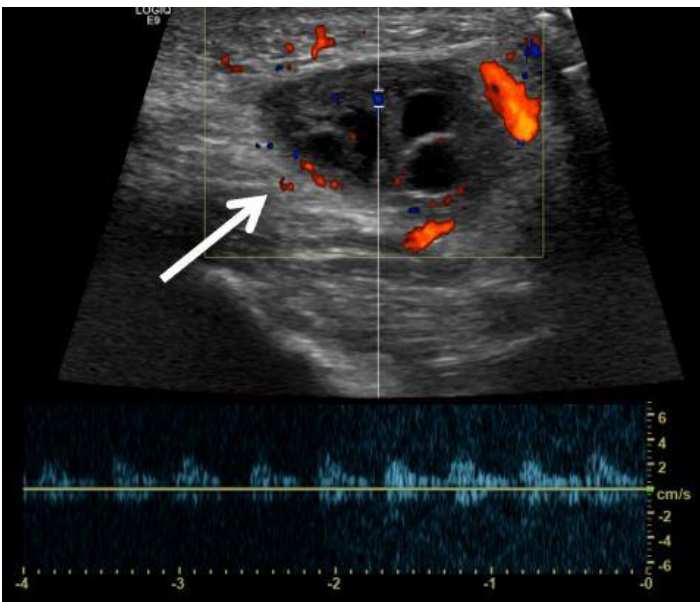


Image 3. Ultrasonography with Doppler showing an incarcerated ovary (arrow) within an inguinal hernia.

reducible, as forceful reduction of the mass could result in torsion.³ Ultrasound will differentiate the contents of the hernia sac and determine whether appropriate blood flow is present if an ovary is involved.⁴ An irreducible ovary is at higher risk for ovarian torsion, given alteration of anatomy, and should be treated as a surgical emergency.⁵

The authors attest that their institution requires neither Institutional Review Board approval nor patient consent for publication of this case report. Documentation on file.

CPC-EM Capsule

What do we already know about this clinical entity?

Inguinal masses are a common chief complaint in infants presenting for emergency care. Majority of these are inguinal hernias and may contain bowel.

What is the major impact of the image(s)?

These images demonstrate an inguinal hernia in a female containing an ovary rather than bowel.

How might this improve emergency medicine practice?

Point-of-care ultrasound to identify the contents of an inguinal mass will improve and expedite patient care and management.

Address for Correspondence: Nisha Polavarapu, MD, Hackensack University Medical Center, Department of Pediatric Emergency Medicine, 30 Prospect Ave, Hackensack, NJ 07601. Email: nisha.polavarapu@hmn.org.

Conflicts of Interest: By the CPC-EM article submission agreement, all authors are required to disclose all affiliations, funding sources and financial or management relationships that could be perceived as potential sources of bias. The authors disclosed none.

Copyright: © 2022 Polavarapu et al. This is an open access article distributed in accordance with the terms of the Creative Commons Attribution (CC BY 4.0) License. See: <http://creativecommons.org/licenses/by/4.0/>

REFERENCES

1. Yeap E, Pacilli M, Nataraja RM. Inguinal hernias in children. *Aust J Gen Pract.* 2020;49(1-2):38-43.
2. Cerit KK, Ergelen R, Colak E, et al. Inguinal hernia containing uterus, fallopian tube, and ovary in a premature newborn. *Case Rep Pediatr.* 2015;2015:807309.
3. Abdulhai SA, Glenn IC, Ponsky TA. Incarcerated pediatric hernia. *Surg Clin North Am.* 2017;97(1):129-45.
4. Tilt L and Kessler DO. Rapid evaluation of an inguinal mass in a female infant using point-of-care ultrasound. *Pediatr Emerg Care.* 2014;30(5):366-7.
5. Boley SJ, Cahn D, Lauer T, et al. The irreducible ovary: a true emergency. *J Pediatr Surg.* 1991;26(9):1035-8.