

UC Riverside

Cliodynamics

Title

Technical and Methodological Comments on McLaughlin et. al. (2018)

Permalink

<https://escholarship.org/uc/item/1f93p9w5>

Journal

Cliodynamics, 13(0)

Author

Hall, Mark E

Publication Date

2022

DOI

10.21237/C7clio13054545

Copyright Information

Copyright 2022 by the author(s). This work is made available under the terms of a Creative Commons Attribution License, available at <https://creativecommons.org/licenses/by/4.0/>

Technical and Methodological Comments on McLaughlin et al. (2018)

Mark E Hall

*Black Rock Field Office, Winnemucca District, Bureau of Land Management,
Department of Interior*

McLaughlin et al. (2018) argue for similar trends in the medieval Irish historical record and the archaeological radiocarbon record. Part of their results are due to an ad-hoc bandwidth being used to calculate the kernel density estimates (KDEs). This contribution looks at using a data-driven bandwidth to re-calculate the KDEs and look at the first derivative of the KDEs. The results here indicate the radiocarbon record declines much sooner than the early 9th century and not recovering again until the late eleventh century. Comments are also noted on the Irish annals and the approach evidenced in the archaeological literature, for at least one region, on the use of radiocarbon dates.

Introduction

While McLaughlin et al. (2018; hereafter ML) is an ambitious and interesting approach that works at linking the archaeological data to the historical annals for medieval Ireland, there are some methodological and technical shortcomings that need to be noted. The purpose of this research note is to highlight some of the methodological and technical issues with ML and to provide a re-analysis of the data.

Further Considerations: Historical Annals

The *Annals of Ulster* have extensive coverage from the 5th century CE through the 16th century CE and serve as the basis for much of ML's arguments. They downplay the utility of other annals by noting:

Other Irish annals, such as the 17th century Annals of the Four Masters were compiled retrospectively for the early medieval period. Although they did draw on primary source material (including the Annals of Ulster) they cannot be considered for analysis of this kind due to the distance that separated the annals and the events they describe. (ML 7)

Corresponding author's e-mail: mehall@blm.gov

Citation: Hall, Mark. E. 2022. Technical and Methodological Comments on McLaughlin et al. (2018). *Cliodynamics* 13 Forum 1: 1-20.

This statement may be true for the *Annals of the Four Masters* but is less appropriate for the other annals. In the case of the *Annals of Innisfallen*, for example, while having common sources with the *Annals of Ulster*, these annals are compiled using annals from Emly and Munster (McCarthy 2008, 313-24). It also bears noting that the *Annals of Innisfallen* contain 119 unique entries for the period CE 912-1092 that focus on the lower Shannon River region (Grabowki and Dumville 1984:69-88). In terms of compilation, despite not having as much time depth, the *Annals of Tigernach*, *Annals of Roscrea*, and *Chronicum Scotorum* are believed to be compiled from Clonmacnoise annals with other sources (McCarthy 2008: 304-14). In the case of the *Annals of Tigernach*, the two Rawlinson manuscripts date to the 12th and late 14th century CE respectively.

Their statement further ignores the fact that the *Annals of Ulster* in their current form are a compilation of annals from Clonmacnoise, Armagh, Derry, and Fermanagh (McCarthy 2008, 313-24).¹ Kelleher (1963) noted there was clearly an editorial bias introduced into several of the annals, including the *Annals of Ulster*, which promoted the kingship of the Ui Neill dynasties (see also Maney 2004/2005). Further, the current manuscripts of the *Annals of Ulster* are believed to date to the late 15th to first of the 16th century CE and can be questioned likewise on their distance from the events.

Despite the assertion by ML (7), there are other relevant annals that could be used that would impact their results. Accounting for the 119 entries from the *Annals of Innisfallen* would also shift the density of annals/year in Figure 2 of their article.

Further Considerations: Radiocarbon Dates

The radiocarbon record depends on what survives that can be dated, and what archaeologists determine need to be dated. ML (14) argue that the size of the radiocarbon database renders null any bias, though they fail to fully acknowledge excavator and research bias. From a review of the *Ulster Journal of Archaeology* from 2000 through 2016, 24 sites with a High Medieval (after 1169) component were excavated. Only 13 of the 24 sites with a High Medieval component were dated by radiocarbon dating; in many cases the sites or their particular component were dated primarily by pottery or other finds, and a single radiocarbon date is often only provided as supplemental information. For Early Medieval sites over the same time, out of 17 sites, 13 were radiocarbon dated. At many of these sites,

¹ While there are those who disagree with McCarthy (see for example Charles-Edwards 2009/2010), even rejecting his reconstruction of the *Annals of Ulster*, there is an earlier set of scholars which advanced the *Annals of Ulster* were a compilation of earlier annals (Smyth 1972).

multiple radiocarbon dates of the Early Medieval component were taken.² An examination of the potential impact of radiocarbon dating more sites with a High Medieval period component will be discussed in a following section.

Also of concern is the quality of the dataset under consideration. How thorough has been the search for dates from Irish sites, or has it depended only on what was in Chapple (2015)? ML only lists ten dates from the site of Ballyhanna, Co. Donegal in their database. Going to the original publication for Ballyhanna (McKenzie and Murphy 2011), one will find that there are 34 radiocarbon dates for the site that date between 1800 and 600 radiocarbon years bp.³

Kernel Density Estimates

Kernel density estimates (KDEs) have recently been adopted by those working with radiocarbon dates to reduce spurious peaks caused by the calibration curve (Bronk Ramsey 2017; Brown 2015; Carleton 2021). Average or composite estimates of multiple KDEs are used to reduce calibration artifacts and potentially are a better reflection of the true growth rate (Brown 2017). Individual KDEs based on a single sample do not conflate process variation and chronological uncertainty, but when the samples are combined via bootstrapping (or any other relevant method), the resultant combined KDE does mix chronological uncertainty and process variation. This means KDEs can be useful when employing an “integral approach” and less so for a “point-wise approach” (Carleton and Groucutt 2021, 630-34).⁴

One oversight in the use of KDEs by some archaeologists is the lack of a mathematical or statistical methodology in calculating the bandwidth which is then used to calculate the KDE.⁵ This issue received attention in Bronk Ramsey (2017), and a methodology for dealing with the bandwidth issue is provided in the

² Crema (2021c, 5) notes the bias in using other dating methods when dealing with historical periods.

³ Twenty-four additional samples would increase the burial data set for Ireland by almost 5%. My interest is in the archaeology and history of the province of Ulster. ML’s database contains only 470 radiocarbon dates from Ulster between the years 1800 and 600 radiocarbon years bp. For the same radiocarbon time period, I have assembled a database containing 510 radiocarbon dates that were published between 1960 and 2016.

⁴ The “integral approach” focuses on the temporal distribution of the data set and utilizes areas of summed probability distributions (SPDs) or KDEs across intervals of time. The “point-wise approach” focuses on the number of events dated to a particular time. See Carleton and Groucutt (2021) for a more in-depth discussion.

⁵ For example, an ad-hoc bandwidth is used in Brown and Ames 2019, Capuzzo et al. 2020, and Riris 2019.

OxCal program (Bronk Ramsey 2009). Bandwidth selection is more recently discussed in Crema (2021c).

In the case of ML, an ad-hoc bandwidth was used to calculate the KDEs. Sheather (2004) noted the bandwidth is the most crucial element in determining the shape of the KDE. Ideally, a properly chosen bandwidth is one that minimizes the mean integrated squared error (MISE) (Hazelton 1996, Baxter et al. 1997, Jones et al. 1998, Sheather 2004). When the bandwidth is too small, it will under-smooth the KDE, create spurious peaks, and contain noise (Loader 1999, Sheather 2004). When the bandwidth is too large, over-smoothing will occur and features in the KDE will be obscured (Sheather 2004).

For the results discussed in this contribution, a data driven bandwidth as proposed by Sheather and Jones (1991; cf. Sheather 2004) is calculated from each bootstrap sample of the calibrated radiocarbon dates. While the Sheather-Jones plug-in method is known to over-smooth complex densities (Loader 1999), its overall performance provides an optimal balance between bias and variance (Jones et al. 1996).

The first derivative of a kernel density estimate is the instantaneous rate of change at any given point in time. While ML discusses trends in the data, there is no discussion in the rates of change in the KDE. The rates of change are important when discussing downward trends and stability. In the re-analysis below, first derivative plots will be presented.

The 95% confidence intervals (CI) and the median are calculated from the bootstrap samples and are illustrated in both the KDE and first derivative plots. As a reminder, the 95% CI is an interval estimate that we can be 95% confident, out of all intervals, contains the parameter of interest (Gardner and Altman 1986; Sim and Reid 1999). It also bears noting that KDE confidence intervals are point estimates (Chen 2017:164, 167-69).

Re-analysis of the data set

The re-analysis presented below examines: 1) all the radiocarbon dates from Ireland in ML; 2) just the burial radiocarbon dates from Ireland; 3) radiocarbon dates of cereals from a variety of Irish contexts; and 4) the settlement debris. Bootstrapped KDEs and first derivatives of the KDEs were generated from the calibrated radiocarbon dates.

All statistical operations were done in the open-source package R (R Core Team 2020). Uncalibrated radiocarbon dates were first calibrated using *Bchron* (Haslett and Parnell 2008), and then calibrated probability distributions were sampled 1000 times. The bandwidth of each sample was calculated using the Sheather-Jones plug-in method as implemented by the *hsj* command in the *sm* package (Bowman and Azzalini 2018). KDEs and the first derivative of the KDE were

calculated using the *kedd* (Guidoum 2015) library. Global modes are calculated using the *hdr* command from the *hdrcde* library (Hyndman, Einbeck and Wand 2021). The overlapping coefficient (OVL) was calculated with the *sfsmisc* library (Seminar fuer Statistik 2021).

Figure 1 contains plots of the re-analysis of all the radiocarbon dates for Ireland. The histogram of the calculated Sheather-Jones plug-in bandwidths from the 1000 bootstrap samples is in the left panel. The mean bandwidth for all the data is equal to 42.68 years, with a 95% CI ranging from 37.56 to 47.24 years. The right panel in Figure One is a comparison of the two KDEs. The 95% CIs are represented by a dotted line, while the solid line represents the median value of the KDE curve. The black curves are calculated with a 30-year bandwidth and the red curves are calculated with a Sheather-Jones plug-in bandwidth. What is noticeable in both figures is that the confidence interval--which is a measure of variability--is much narrower with the Sheather-Jones plug-in bandwidth.

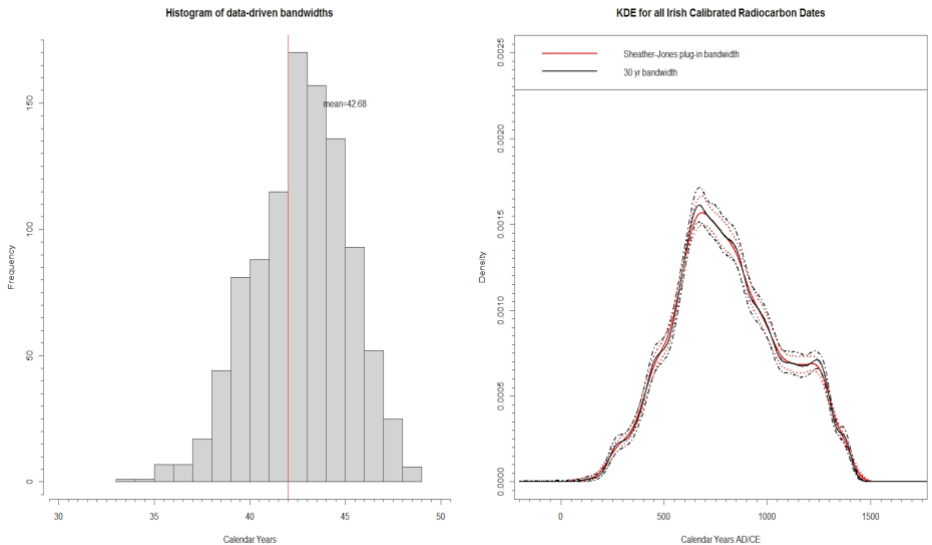


Figure 1. Results of using a Sheather-Jones plug-in bandwidth. The left most panel is a histogram of the bandwidth for each bootstrap sample. The right panel is the KDE with 95% CI for all the calibrated radiocarbon dates reported in McLaughlin, et al. 2018. The KDE using a 30-year bandwidth (KDE_{30}) is in black, the KDE using the Sheather-Jones bandwidth (KDE_{SJ}) is in red.

Table 1. Comparisons of Global Maximums

Data Group	30 year bandwidth		Data-driven bandwidth	
	2.5% CI	97.5% CI	2.5% CI	97.5% CI
All	669	673	688	685
Burial	625	638	649	642
Cereals	646	668	703	769
Settlement debris	841	837	815	818
Simulated-15%	n/a	n/a	659	659
Simulated-30%	n/a	n/a	1255	1258

For the KDE calculated with the 30-year bandwidth (KDE_{30}), based on the 95% CI, the KDE peaks sometime between 669–673 CE (Table 1). The KDE calculated using the Sheather-Jones plug-in (KDE_{SJ}) peaks between 685–688 CE. After both KDEs peak, they begin to decline. Looking at the first derivatives of the KDE_{30} , the 95% CI becomes negative between 654–855 CE (Figure 2). Thereafter, the 95% CI contains negative rates of change. For the KDE_{SJ} , the rate of change becomes negative between 666–826 CE. Likewise, the 95% CI for this first derivative also contains negative values after 826 CE.

For the entire dataset for Ireland, the KDEs and first derivatives, despite being calculated with different bandwidth approaches, have similar results. Both KDEs contain a global mode dating to the late 7th century and the densities decrease thereafter. The 95% CI for the first derivative of the KDEs have negative rates of change between the second half of the 7th century and the first half of the 9th century.

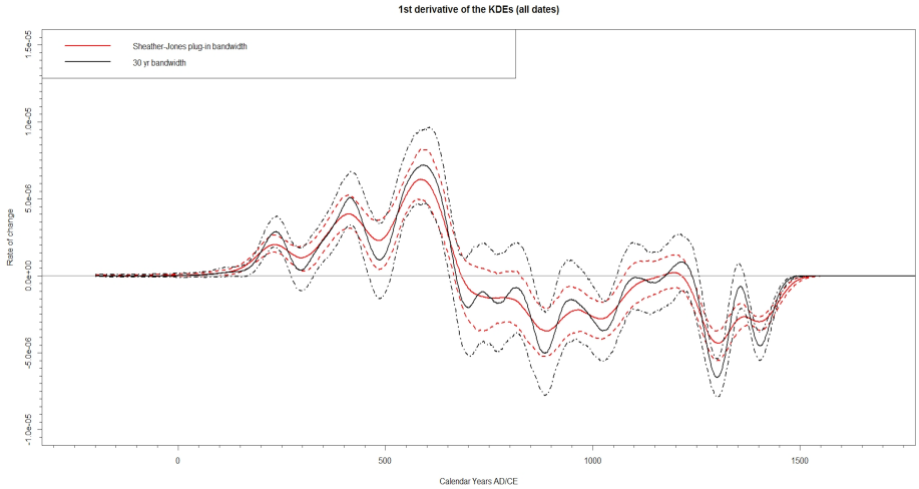


Figure 2. First derivative (with 95% CIs) for the two KDEs. The rate of change becomes negative sometime between the mid-7th to 9th centuries CE. Note the width of the CIs; the one calculated with a Sheather-Jones plug-in bandwidth is much narrower.

Figures 3 and 4 plot the results for the radiocarbon dates from burials. The mean bandwidth is equal to 52.79 years, with a 95% CI ranging from 43.44 to 60.47 years. The KDE₃₀ has a global mode between 625–638 CE (Table One). The KDE_{SJ} peaks between 642–649. The first derivative of the KDE₃₀ becomes negative between 608–656 CE (Figure 4). The 95% CI contains both positive and negative values thereafter. For the KDE_{SJ}, the 95% CI for the first derivative becomes negative sometime between 624–662 CE. Between 1049–1163 CE, the rate of change becomes positive again and stays that way until sometime between 1216–1262 CE. Both KDEs point to a downturn in the 7th century.

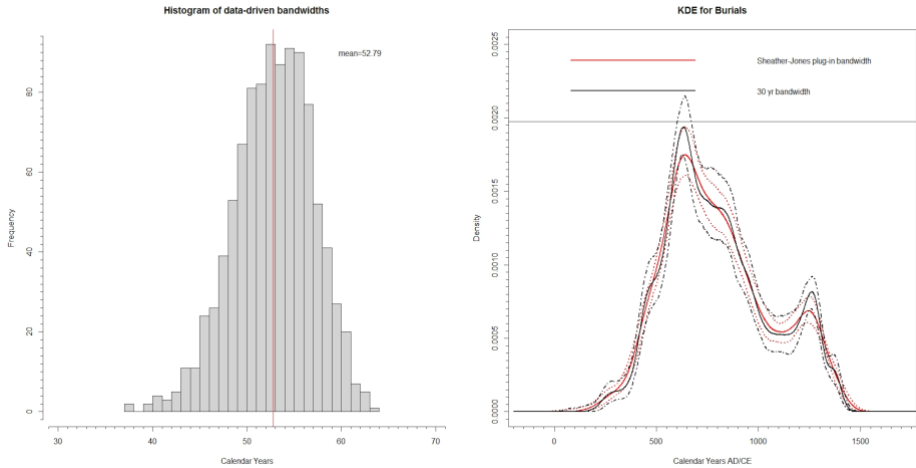


Figure 3. Sheather-Jones bandwidth for the bootstrap samples of the calibrated radiocarbon dates for burials (left). KDEs using a 30 year bandwidth and a Sheather-Jones bandwidth (right). The KDE_{SJ} indicates that there are two modes in the data; the KDE_{30} suggests a third.

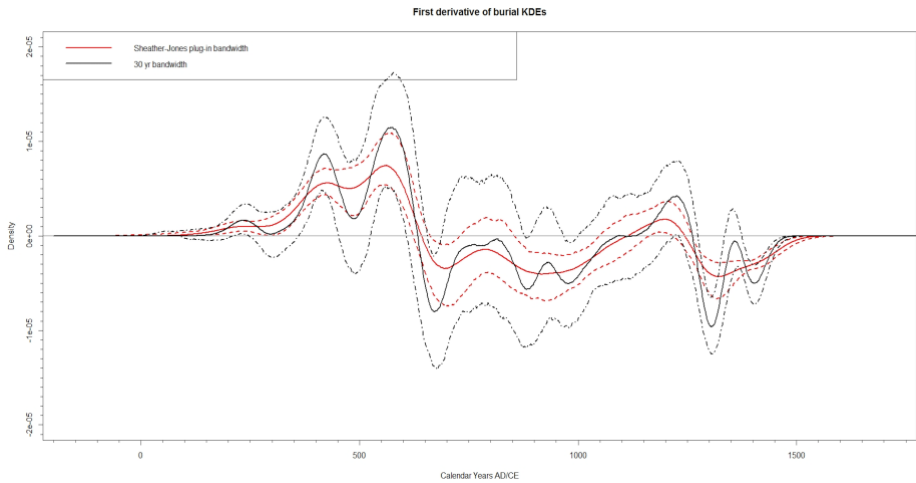


Figure 4. First derivative of the burial KDEs. The derivatives of both KDEs point to a negative rate of change in the 7th century CE.

Figure 5 contains the results for the calibrated radiocarbon dates from cereals in Ireland. The mean of the Sheather-Jones plug-in bandwidth is 65.91 years, with a 95% CI ranging from 56.04 to 75.97 years. The median KDEs clearly show the effect of undersmoothing with the 30-year bandwidth— KDE_{30} has two peaks whereas KDE_{SJ} has only one. The 95% CI for the KDE_{30} has a global mode between 646–668 CE. The KDE_{SJ} curve peaks between 703–769 CE. Between 383–442 CE, the 95% CI of the first derivative of KDE_{30} is positive (Figure 6). Thereafter the 95% CI covers both positive and negative rates of change from 443 through 1187 CE. The rate of change is briefly positive between 1188–1224 CE. For the 95% CI of the first derivative of KDE_{SJ} , it becomes negative between 654–862 CE. Positive growth rates occur again between 1127 and 1215 CE.

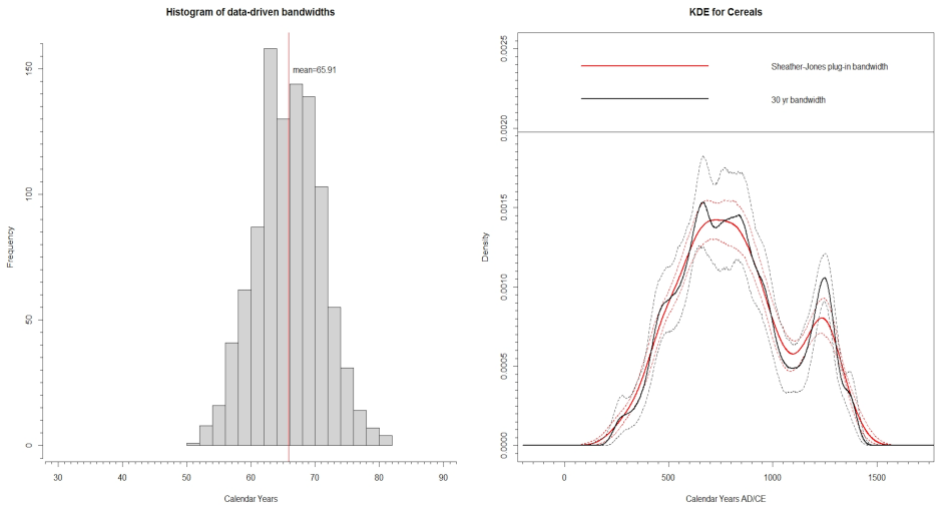


Figure 5. Sheather-Jones bandwidth for the bootstrap samples of the calibrated radiocarbon dates for cereals (left). KDEs using a 30 year bandwidth and a Sheather-Jones bandwidth (right). Note the numerous modes in KDE_{30} versus KDE_{SJ} .

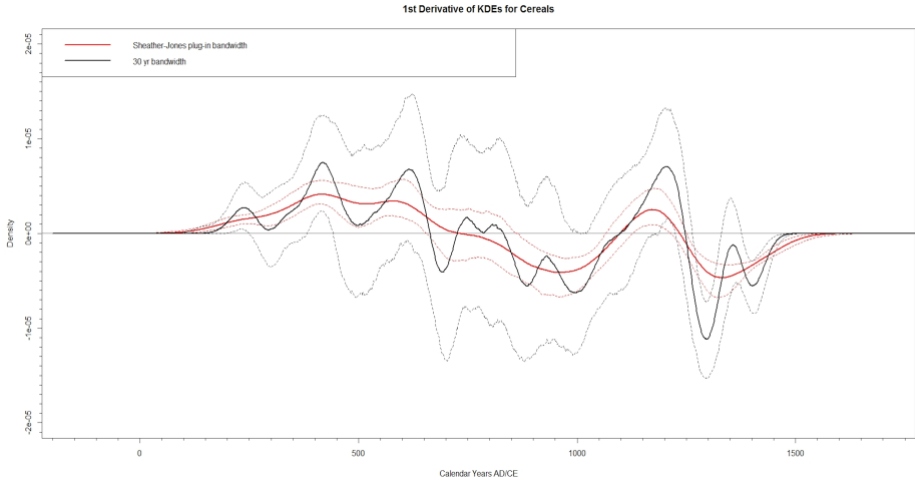


Figure 6. First derivative of the cereal KDEs. The 95% CI of the first derivative of KDE_{30} raises the possibility of a downturn as early as the 5th century CE. The first derivative of KDE_{SJ} has less variability and is easier to interpret.

The re-analysis of the settlement debris is in Figure 7. The mean of the Sheather-Jones plug-in bandwidth is 80.64 years, and the 95% CI is 66.75 to 89.93 years. Once again, the median KDEs illustrate the issue with undersmoothing using a 30-year bandwidth. The KDE_{30} peaks between 836–841 CE. The first derivative of KDE_{30} , based on the 95% CI, becomes negative between 657 and 1264 CE (Figure 8). Thereafter the 95% CI covers both positive and negative values. For the KDE_{SJ} , it peaks between 683–737 CE. Negative rates initially occur sometime between 763–861 CE in the first derivative of KDE_{SJ} . The 95% CI stays negative after that. The first derivative of KDE_{30} becomes negative sometime between 657–1264.

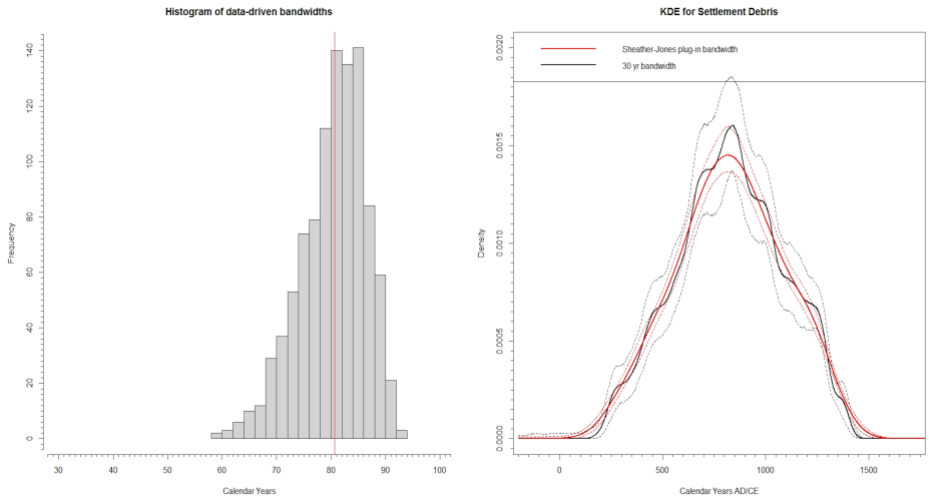


Figure 7. Sheather-Jones bandwidth for the bootstrap samples of the calibrated radiocarbon dates for settlement debris (left). KDEs using a 30 year bandwidth and a Sheather-Jones bandwidth (right). Note the multi-modality of KDE_{30} .

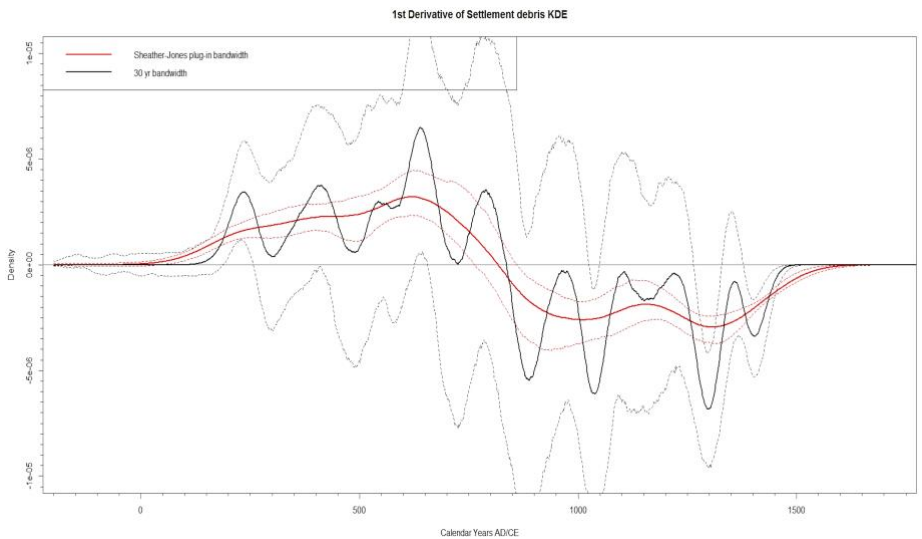


Figure 8. First derivatives of the settlement debris KDEs. The data driven bandwidth produces a 95% CI with lower variance.

High Medieval period radiocarbon dates

As noted above, the lack of dating High Medieval sites by radiocarbon dating can influence the results. For the data set under consideration, 2331 out of 2636 radiocarbon dates pre-date the start of the High Medieval period (circa 880 radiocarbon years bp or 1169 CE).

To look at the effect of dating more samples from the High Medieval period, two simulated data sets were created from the original radiocarbon data. The first simulated data set is created by randomly sampling with replacement the raw radiocarbon dates and standard deviations to create a new set of radiocarbon determinations such that 15% of the radiocarbon dates post-date the start of the High Medieval period. The second simulated data set was created in similar fashion so that 791 out of 2636 radiocarbon dates, or 30%, post-date the start of the High Medieval period.

Figure 9 contains the plots of the KDEs created by using the original and simulated radiocarbon data sets. The mean bandwidth for the 15% data set is 37.92, with a 95% CI ranging from 33.72 to 42.07. The mean bandwidth for the 30% data set is 26.63, with a 95% CI ranging from 24.85 to 28.40.

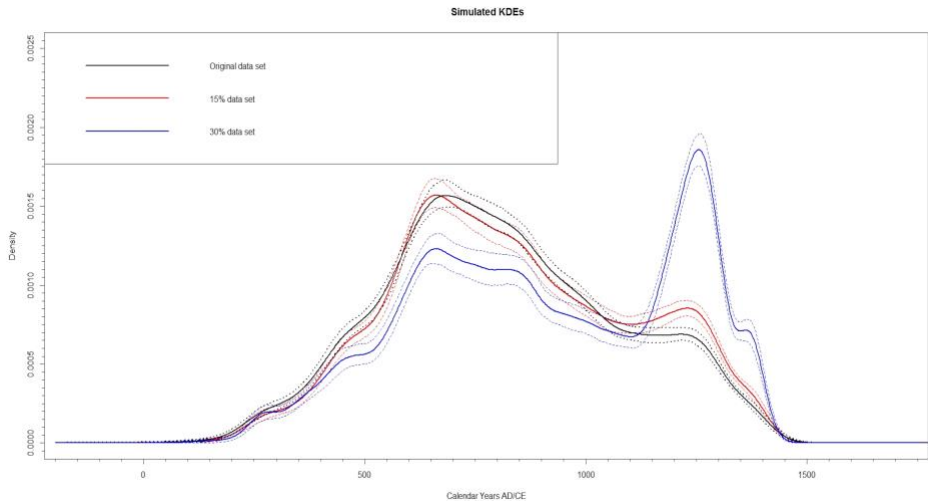


Figure 9. KDEs for the simulated data sets versus the original data set. All KDEs were calculated using a Sheather-Jones plug-in bandwidth. As illustrated, the increasing number of High Medieval period dates creates a new mode in the KDE. A simulated data set with 35% High Medieval period dates has a significantly different global mode.

The differences are readily apparent between the three KDEs. As the radiocarbon dates increase for the High Medieval period, a new mode appears in the 12th to 13th centuries CE. The global mode for the 15% data set is CE 659 (see Table One). Despite having an OVL ranging from 0.958 to 0.962, there are statistically significant differences between the KDEs of the original and 15% data set since their confidence intervals do not overlap between circa 1150–1350 CE.⁶ The global mode for the 30% data set is 1255–1259 CE. Comparing the 30% data set to the original, the OVL ranges from 0.809 to 0.839, and the two 95% CIs do not overlap between circa 500–950 CE and circa 1150–1450 CE.

These two simulations for the High Medieval period illustrate the effect of biases in sampling and dating. Price et al. (2021, 2) note that even as the number of observations increase for a KDE or a summed probability distribution (SPD), they will not converge on the true distribution. Sampling bias can exacerbate this issue even further.

One is justified in asking if there is suitable material to date from the High Medieval period in Ireland. The answer is “yes”. Some examples are, but not limited to: a) the faunal remains from the multi-period site of Aghavea, Co. Fermanagh (Ó Baoill et al. 2013/2014); b) the human remains from Saint Thomas’s church on Rathlin Island, County Antrim (Gormley et al. 2009); c) the faunal remains from the rural settlement at Portmuck, Islandmagee, County Antrim (Anderson et al. 2004), and d) the burials from the Cistercian abbey at Newry, County Down (Dawkes and Buckley 2009).

Summary

The main points concerning ML’s use of data are:

1. While the *Annals of Ulster* have time depth, there are other suitable annals that could be used in a study like that which ML offer. The *Annals of Ulster* were subject to political tampering as the other annals.
2. While ML note some shortcomings with the radiocarbon record, they fail to note that at least in Ulster there is a propensity to date Early Medieval sites with multiple radiocarbon dates, while High Medieval period sites are less commonly radiocarbon dated. The lack of dates in this later phase, as demonstrated with two simulations, can impact the modes of the KDE.
3. The 30-year bandwidth in all cases under-smooths the dataset and creates spurious peaks in the KDE. This is particularly evident in the

⁶ Overlapping CIs may or may not have a statistically significant difference (Tan and Tan 2010, Greenland et al. 2016). When CIs do not overlap, they do have a statistically significant difference.

cereal and settlement debris KDEs. The Sheather-Jones plug-in method minimizes the variance of the KDE, and thus, the 95% CI for the resulting KDE and its first derivative are less than those that were created with an ad-hoc, 30-year bandwidth.

4. Except for the settlement debris radiocarbon dates, the radiocarbon datasets re-analyzed using a Sheather-Jones plug-in bandwidth have negative rates starting in the mid-7th to early 8th centuries CE. A negative rate implies the curve is now concave and heading towards a minimum, and there is a negative growth rate. ML's argument for stability ML (13) appears to be based solely on the shape of the KDE, overlooking the rate of change as evidenced in the first derivative of the KDEs. This decline is also earlier than stated in ML (11).
5. While ML (13) do not define stability or decrease in their Table 1, I interpret the period between 700 and 825 as unstable since the 95% CI of the first derivative of the KDE_{SJ} goes from being positive to negative. This would indicate that there is a declining growth rate.
6. Depending on the radiocarbon dataset examined, the first derivative of KDE_{SJ} becomes positive sometime in the late 11th century to early 12th century and continues until the mid-13th century. From a radiocarbon perspective this indicates an upswing in socio-cultural activity. This could possibly be due to the Anglo-Norman/Anglo-Welsh colonization of Ireland.

Prehistorians and others working with differences and uncertainty at the centennial scale may question if the differences at the decadal level or below are truly important. This author would say "yes". Bootstrapped KDEs account for sampling error, chronological uncertainty, and calibration effects (Carleton and Groucutt 2021, 136; Crema 2021c, 10). By utilizing the historical record and palaeoclimate/palaeoenvironment proxies within an "integral approach", one can formulate hypotheses on climate, historical events, and their potential effect on socio-economic development in Ireland during the Early and High Medieval periods.

For example, looking at the global modes and their subsequent decreases for all the radiocarbon dates from Ireland, the decade between 669–678 CE, which encompasses the global mode of KDE₃₀, reveals that Ireland had reconstructed Palmer Drought Severity Index (PDSI) values indicative of a moist climate (Cook et al. 2015). The *Annals of Ulster* (Airt and Mac Niocail, 1983), in addition to containing records of dynastic conflicts, note a famine (670 CE), snowfall (670 CE) and later an abundance of mast in this decade (672 CE). The decade between 685 and 694, which contains the global mode for KDE_{SJ}, is marked by: a) a decade long

mild drought in Ireland (Cook et al. 2015); b) dynastic conflict⁷; c) an earthquake and windstorm is noted as occurring in 685 CE in the *Annals of Ulster*, *Annals of Tigernach* (Niocaill 2011) and the *Chronicon Scotorum* (Niocaill 2010).

It also needs to be noted that this data set could be re-analyzed by other approaches and methods which may possibly provide alternative results and interpretations. Crema (2021c) divides the possible approaches down into three different groups:

1. reconstructive approaches
2. null-hypothesis significance testing (NHST)
3. model-fitting approaches

ML and this study are characteristic of the reconstructive approach. NHST approaches, as deployed in *rcarbon* (Crema and Bevan 2020), allow one to test specific hypotheses through the use of Monte Carlo simulation and permutation tests. Model-fitting approaches have been more recently developed, and some examples of programs implementing this approach are *ADMUR* (Timpson 2020; Timpson et al. 2021), *bayesdem* (Price et al. 2021), and *nimbleCarbon* (Crema 2021a, 2021b). Model-fitting approaches, however, can be computationally intensive, particularly for large data sets.

Which of these methods is best depends on the question being asked. The reconstructive approach, as used here, can provide a quick preliminary, qualitative assessment of differences along the time-axis. While explanations are proffered in ML, no formal hypothesis testing nor modelling occurred. The reconstructive approach only provides a starting point for other analyses.

NHST approaches allow specific hypotheses to be tested—such as whether the distribution of dates conform or deviate from a specific population growth model or whether two sets of dates have similarly shaped KDEs or SPDs. For example, the burial and settlement data presented in ML could be tested to see if the two data sets truly come from similar distributions and have a similar pattern of growth and decline. The NHST approach is more robust but has limitations regarding p-values (Crema 2021c). Like any null hypothesis test, large sample sizes can provide a low p-value—suggesting significance—but the p-value does not assess the effect size nor the probability of the model being correct.⁸

⁷ While much of the dynastic conflict for the 7th century CE in the *Annals of Ulster* is focused on the Irish territories of Ulster and Mide, the *Chronicon Scotorum* for 693 CE records conflict between the southern territory of Osraige and the Laigin from the province of Leinster.

⁸ There is a large body of literature on the problem of p-values and their misinterpretation. See for example Schervish (1996), Sterne and Smith (2001), Greenland et al. (2016), Szucs and Ioannidis (2017).

Model-fitting approaches allow one to deal with the chronological uncertainty and/or the sampling errors associated with radiocarbon dates. These approaches allow for multiple models to be tested and determine which model fits best. For the Irish radiocarbon data set, for example, *nimbleCarbon* could be used to determine the changepoint in the growth rate of the SPD of the calibrated radiocarbon dates. The calendar year(s) of the changepoint could then be compared to the dates for when the first derivative of the KDEs become negative.

References

- Airt, Seán Mac and Gearóid Mac Niocaill, eds. 1983. *The Annals of Ulster*. Dublin: School of Celtic Studies. Accessed April 17, 2022.
<http://research.ucc.ie/celt/document/T100001A#Year.254>
- Anderson, Sue, Alastair Roy Rees, Catherine M. Dunne, Sarah Gormley, Sheila Hamilton-Dyer, Eileen M. Murphy, Eiméar L. Nelis, and Mark Noel. 2004. The excavation of a medieval rural settlement site at Portmuck, Islandmagee, County Antrim. *Ulster Journal of Archaeology* 63: 76-113.
- Baxter, Mike, C. C. Beardah, and R. V. S. Wright. 1997. Kernel density estimation in archaeology. *Journal of Archaeological Science* 24: 347-354
- Bowman, A. W. and A. Azzalini. 2018. R package 'sm': nonparametric smoothing methods (version 2.2-5.6) <http://www.stats.gla.ac.uk/~adrian/sm>
- Bronk Ramsey, Christopher. 2009. Bayesian analysis of radiocarbon dates. *Radiocarbon* 51(1): 337-360. doi:10.1017/S0033822200033865
- Bronk Ramsay, Christopher. 2017. Methods for summarizing radiocarbon datasets. *Radiocarbon* 59(6): 1809-1833. doi.org/10.1017/RDC.2017.108
- Brown, William A. 2017. The past and future of growth rate estimation in demographic temporal frequency analysis: Biodemographic interpretability and the ascendance of dynamic growth models. *Journal of Archaeological Science* 80: 96-108. <https://doi.org/10.1016/j.jas.2017.02.003>
- Brown, Thomas and Kenneth Ames. 2019. Synthesis and analysis of the Early to Middle Holocene radiocarbon record for the Northern Northwest Coast of North America: A gap in dated components between ~9000 and 8300 cal BP. *Journal of Island and Coastal Archaeology*. doi.org/10.1080/15564894.2019.1659883
- Brown, William. 2015. Through a filter, darkly: population size estimation, systematic error, and random error in radiocarbon-supported demographic temporal frequency analysis. *Journal of Archaeological Science* 53: 133-147. doi.org/10.1016/j.jas.2014.10.013
- Capuzzo, Giacomo, Christophe Snoeck, Mathieu Boudin, Sarah Dalle, Rica Annaert, Marta Hlad, Ioannis Kontopoulos, Charlotte Sabaux, Kevin Salesse, Amanda Sengeløv, Elisavet Stamataki, Barbara Veselka, Eugene Warmenbol, Guy De

- Mulder, Dries Tys, and Martine Vercauteren. 2020. Cremation vs. inhumation: Modeling cultural changes in funerary practices from the Mesolithic to the Middle Ages in Belgium using kernel density analysis on 14C data. *Radiocarbon* 62(6): 1809-1832. doi.org/10.1017/RDC.2020.88
- Carleton, W. Christopher. 2021. Evaluating Bayesian radiocarbon-dated event count models for the study of long-term human and environmental processes. *Journal of Quaternary Science* 36(1): 110-123.
- Carleton, W. Christopher and Huw S. Groucutt. 2021. Sum things are not what they seem: Problems with point-wise interpretations and quantitative analyses of proxies based on aggregated radiocarbon dates. *The Holocene* 31(4): 630-643.
- Charles-Edwards, T. M. 2009-2010. *The Irish Annals: their genesis, evolution and history* by D. P. McCarthy. *Studia Hibernica* 36: 207-210.
- Chen, Yen-Chi. 2017. A tutorial on kernel density estimation and recent advances. *Biostatistics and Epidemiology* 1(1): 161-187. doi.org/10.1080/24709360.2017.1396742
- Cook, E.R., R. Seager, Y. Kushnir, K.R. Briffa, U. Buntgen, D. Frank, P.J. Krusic, W. Tegel, G. van der Schrier, L. Andreu-Hayles, M. Baillie, C. Baittinger, N. Bleicher, N. Bonde, D. Brown, M. Carrer, R. Cooper, K. Cufar, C. Dittmar, J. Esper, C. Griggs, B. Gunnarson, B. Gunther, E. Gutierrez, K. Haneca, S. Helama, F. Herzig, K-U. Heussner, J. Hofmann, P. Janda, R. Kontic, N. Kose, T. Kyncl, T. Levanic, H. Linderholm, S. Manning, T. M. Melvin, D. Miles, B. Neuwirth, K. Nicolussi, P. Nola, M. Panayotov, I. Popa, A. Rothe, K. Seftigen, A. Seim, H. Svarva, M. Svoboda, T. Thun, M. Timonen, R. Touchan, V. Trotsiuk, V. Trouet, F. Walder, T. Wazny, R. Wilson, and C. Zang, 2015: Old World megadroughts and pluvials during the Common Era. *Science Advances*, 1. doi: 10.1126/sciadv.1500561
- Crema, Enrico R. 2021a. A Bayesian approach for fitting and comparing demographic growth models of radiocarbon dates: a case study on the Jomon-Yayoi transition in Kyushu (Japan). *PloS ONE*, 16(5), e0251695.
- Crema, Enrico R. 2021b. nimbleCarbon: Models and Utility Functions for Bayesian Analyses of Radiocarbon Dates with NIMBLE. <https://github.com/ercrema/nimbleCarbon>
- Crema, Enrico R. 2021c. Statistical inference of prehistoric demography from frequency distributions of radiocarbon dates: a review and a guide for the perplexed. doi.org/ 10.31235/osf.io/grcs2
- Crema, Enrico R. and Andrew Bevan. 2020. Inference from large sets of radiocarbon dates: software and methods. *Radiocarbon* 63(1): 23-39. doi:10.1017/RDC.2020.95
- Crema, Enrico R and Shinya Shoda. 2021. A Bayesian approach for fitting and comparing demographic growth models of radiocarbon dates: A case study on

- the Jomon-Yayoi transition in Kyushu (Japan). *PLoS ONE* 16(5):e0251695. <https://doi.org/10.1371/journal.pone.0251695>
- Dawkes, Giles and Laureen Buckley. 2009. Before Bagenal's Castle: Evidence of the Medieval Cistercian abbey at Newry, County Down. *Ulster Journal of Archaeology* 68: 124-170.
- Gardner, M. J. and D. G. Altman. 1986. Confidence intervals rather p values: Estimation rather than hypothesis testing. *British Medical Journal (Clinical Research Edition)* 292(6522): 746-750.
- Gormley, Sarah, A. L. Brindley, Sheila Hamilton-Dyer, Philip MacDonald, Eileen Murphy, Emily Murray, Gill Plunkett, and Brian Sloan. An excavation at St Thomas's church, Rathlin Island, County Antrim. *Ulster Journal of Archaeology* 68: 64-101.
- Greenland, Sander, Stephen J. Senn, Kenneth J. Rothman, John B. Calvin, Charles Poole, Steven N. Goodman, and Douglas G. Altman. 2016. Statistical tests, p values, confidence intervals, and power: A guide to misinterpretations. *European Journal of Epidemiology* 31(4): 337-350. doi: 10.1007/s10654-016-0149-3
- Guidoum, A. C. 2015. kedd: Kernel estimator and bandwidth selection for density and its derivatives. R package version 1.0.3. <http://CRAN.R-project.org/package=kedd>
- Haslett J., Parnell A. C. 2008. A simple monotone process with application to radiocarbon-dated depth chronologies. *Journal of the Royal Statistical Society: Series C (Applied Statistics)*, 57(4): 399-418. doi.org/10.1111/j.1467-9876.2008.00623.x
- Hazelton, Martin. 1996. Bandwidth selection for local density estimators. *Scandinavian Journal of Statistics* 23(2): 221-232.
- Hyndman, Rob J., Jochen Einbeck, and Matthew P. Wand. 2021. hrdcde: Highest density regions and conditional density estimation. R package version 3.4, <https://pkg.robjhyndman.com/hrdcde/>
- Jones, M. C., J. S. Marron, and S. J. Sheather. 1996. A brief survey of bandwidth selection for density estimation. *Journal of the American Statistical Association* 91(433): 401-407.
- Kelleher, John V. 1963. Early History and Pseudo-history. *Studia Hibernica* 3: 113-127.
- Kim, Habeom, Gyoung-Ah Lee, and Enrico R. Crema. 2021. Bayesian analyses question the role of climate in Chulmun demography. *Scientific Reports* 11, (1): 1-10
- Loader, Clive. 1999. Bandwidth selection: Classical or Plug-in? *The Annals of Statistics* 27(2): 415-438. doi.org/10.1214/aos/1018031201

- Maney, Laurence J. 2004/2005. High-kings and pipe dreams: Revisiting John Vincent Keller's Theory of Revision to the Early Irish Annals. *Proceedings of the Harvard Celtic Colloquium* 24/25: 247-263.
- McKenzie, Catriona and Eileen Murphy. 2011. Health in medieval Ireland: the evidence from Ballyhanna, Co. Donegal." In *Past Times, Changing Fortunes*, edited by Sheelagh Conran, Ed Danaher, and Michael Stanley, 131-144, 152-158. Dublin: National Roads Authority,
- McLaughlin, Rowan, Emma Hannah, and Lisa Coyle-McClung. 2018. Frequency analyses of historical and archaeological datasets reveal the same pattern of declining sociocultural activity in 9th to 10th century CE Ireland. *Clidynamics* 9(1): 1-24. doi.org/10.21237/C7cli09136654
- Niocaill, Gearóid Mac, ed. 2010. *Chronicon Scotorum*. Accessed April 17, 2022. <http://research.ucc.ie/celt/document/T100016>
- Niocaill, Gearóid Mac, ed. 2011. *The Annals of Tigernach*. Accessed April 17, 2022. <http://research.ucc.ie/celt/document/T100002A>
- Ó Baoill, Ruairi, Fiona Beglane, Robert Heslip, Philip MacDonald, Cormac McSparron, Brian Sloan. 2013/2014. The excavation of a multi-period ecclesiastical site at Aghavea, County Fermanagh. *Ulster Journal of Archaeology* 72: 112-141.
- Price, Michael Horton, José M. Capriles, Julie A. Hoggarth, R. Kyle Bocinsky, Claire E. Ebert, James Holland Jones. 2021. End-to-end Bayesian analysis for summarizing sets of radiocarbon dates. *Journal of Archaeological Science* 135: 1-12. doi.org/10.1016/j.jas.2021.105473
- R Core Team. 2020. R: A language and environment for statistical computing. Vienna, Austria: R Foundation for Statistical Computing. <https://www.R-project.org/>.
- Riris, Philip. 2019. Sparse radiocarbon data confound culture-climate links in Late Pre-Columbina Amazonia. *Quaternary* 2(4). doi.org/10.3390/quat2040033.
- Schervish, Mark J. 1996. P values: What they are and what they are not. *The American Statistician* 50(3): 203-206.
- Seminar fuer Statistik. 2021. Utilities from 'Seminar fuer Statistik' ETH Zurich. R package version 1.1-12. <http://CRAN.R-project.org/package=sfsmisc>.
- Sheather, Simon J. 2004. Density estimation. *Statistical Science* 19(4): 588-597. doi.org/10.1214/088342304000000297
- Sheather, S. J. and M. C. Jones. 1991. A reliable data-based bandwidth selection method for kernel density estimation. *Journal of the Royal Statistical Society: Series B (Methodological)* 53(3): 683-690. doi.org/10.1111/j.2517-6161.1991.tb01857.x
- Sim, J. and N. Reid. 1999. Statistical inference by confidence intervals: Issues of interpretation and utilization. *Physical Therapy* 79(2): 186-195.

- Smyth, A. P. 1972. The earliest Irish annals: Their first contemporary entries, and the earliest centres of recording. *Proceedings of the Royal Irish Academy: Archaeology, Culture, History, Literature* 72: 1-48.
- Sterne, Johnathan A. C. and George Davey Smith. 2001. Sifting the evidence— what’s wrong with significance tests? *British Medical Journal* 322(7280): 226-231. doi.org/10.1136/bmj.322.7280.226
- Szucs, Denes and John P. A. Ioannidis. 2017. When null hypothesis significance testing is unsuitable for research: A reassessment. *Frontiers in Human Neuroscience* 11. doi.org/10.3389/fnhum.2017.00390
- Tan, Sze Huey and Say Beng Tan. 2010. The correct interpretation of confidence intervals. *Proceedings of Singapore Healthcare* 19(3): 276-278.
- Timpson, Adrian. 2020. ADMUR: Ancient demographic modelling using radiocarbon. <https://github.com/UCL/ADMUR> (accessed 4 April 2022)
- Timpson, Adrian, Ramiro Barberena, Mark G. Thomas, César Méndez, and Katie Manning. 2021. Directly modelling population dynamics in the South American Arid Diagonal using 14C dates. *Philosophical Transactions of the Royal Society B* 376(1816): 20190723. doi.org/10.1098/rstb.2019.0723