

UC Merced

Journal of California and Great Basin Anthropology

Title

Memorial to Robert Fleming Heizer (1915-1979)

Permalink

<https://escholarship.org/uc/item/40m6w8q5>

Journal

Journal of California and Great Basin Anthropology, 1(2)

ISSN

0191-3557

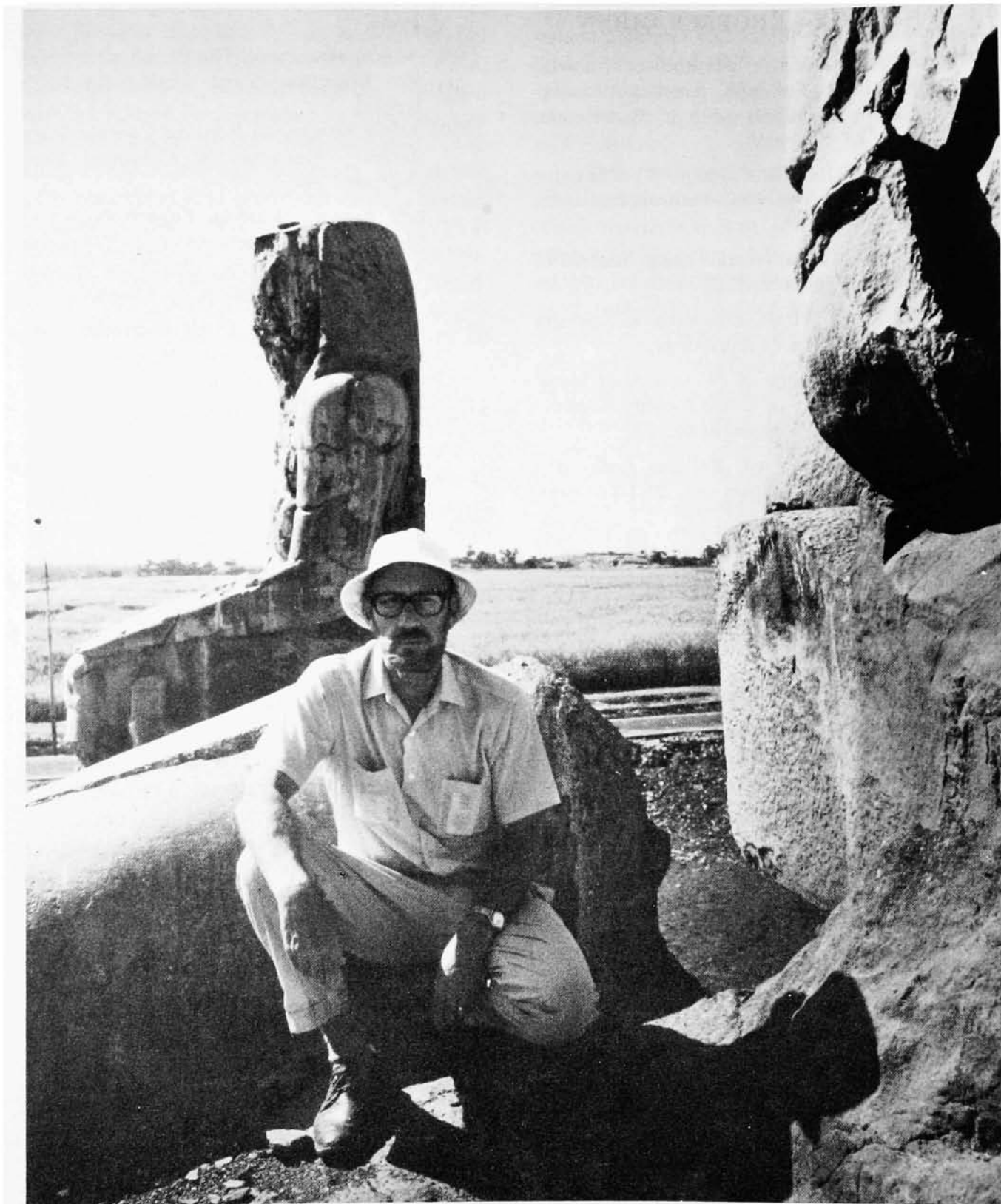
Author

Clark, J Desmond

Publication Date

1979-07-01

Peer reviewed



ROBERT FLEMING HEIZER at the Colossi of Memnon, Thebes, 1973.

Memorial to Robert Fleming Heizer (1915-1979)

ROBERT FLEMING HEIZER, who died 16 July 1979 at the age of 64, was one of the best known and most outstanding archaeologists to have been trained and later to teach at the University of California, Berkeley. His contributions to his profession, to the scholarly world and the public in general, and to his university, were continuous and at an extraordinary and prodigious rate and level of creative excellence that is rare, even in the most distinguished communities of scholars. He was the author of 24 books and nearly 400 scientific articles and monographs that express the remarkable breadth and wide-ranging interests of California's pioneer scientific archaeologist. To Bob Heizer archaeology was a kind of condensed social history from which something valuable could be learned about the facts of man's cultural and intellectual development. To help interpret the past, he drew on a wide range of sources of information and he believed that it is impossible to understand mankind or formulate "laws" of culture without using the data of prehistorians. "I have always believed," he said, "that the information and investigative methods of the natural and life sciences should be brought to bear as much as possible on the materials of archaeology." The way he put this into practice, thereby developing a new insight into the anthropology of past human culture, is apparent from his excursions into subjects such as toxicology, geology, mineralogy, organic chemistry, pedology, demography, mathematics, architecture, history, limnology, law,

conchology, zoology, and economics. Bob was one of the few gifted with such broad intellectual interests and encyclopedic knowledge and he also possessed the energy and creative ability to get so many of his ideas and findings into print. Ranging from book-length treatments of the Olmec civilization of Meso-America, or the prehistoric rock art of California and Nevada, to a study of prejudice and discrimination against Californian minorities under Spanish, Mexican, and U.S. regimes, or X-ray fluorescence analysis of obsidians and replicative experimentation in archaeology, his work is both the foundation stone on which systematic archaeology in California is based and a contribution of major significance for the science of archaeology in general.

That Bob Heizer was equally at home and successful as a prehistorian, ethnographer, or historian was in large part due to his early up-bringing in Nevada. His father was a mining engineer, and Bob grew up in mining towns where he early learned self-reliance and came to identify with both the solitude and the company to be met with in the high deserts of the Great Basin. "A small desert town," he said, "can be a boring place," and he found talking to local Indians and writing down what they told him more interesting than playing pool. It was here, therefore, that he first acquired his understanding and sympathy for the Indians and an appreciation for the antiquity of their highly successful adaptive behavior that was brought to an end by the flood tide of Western culture after 1846. This

shows through in his numerous ethnographic writings and in his more popular books such as *Almost Ancestors: the First Californians* or *Ishi, the Last Yahi: a Documentary History*, both written with Theodora Kroeber; or again in his testifying with Alfred Kroeber and two other anthropologists at the Hearings on Californian Indian Land Claims in 1954 and 1955. Indeed these hearings were mainly responsible for United States Government recognition of the claims of the California Indians and for the settlements that followed.

Heizer graduated from Lovelock High School in Nevada in June 1932 and from there went on to attend Sacramento Junior College for the next two years. The year 1932 was a time when systematic field techniques were just beginning to be developed and put into practice in the United States. He himself said, "American archaeology was just being born and the news of the nativity had not reached Sacramento." Most outstanding archaeologists are fanatics and Bob was no exception. His deep and abiding interest in prehistory was encouraged by his tutors at Sacramento and showed itself in the role he played in leading a small group of students on the first archaeological field program in California. Carried out on weekends, these excavations revealed the three basic cultures of the Sacramento Valley region and led to his publishing later, in collaboration with other students, a manual of field techniques. This was the precursor of the most widely used and best known text on archaeological field techniques in the country, *Field Methods in Archaeology*, now in its sixth edition, written in collaboration with T. R. Hester and J. A. Graham.

He was admitted to the University of California, Berkeley, in the fall of 1934, and received his A.B. degree in 1936. Later, as a graduate in the Anthropology Department, he benefited greatly from some of the foremost teaching in anthropology then available and was greatly influenced by Kroeber, Lowie, and

Gifford. Bob was a rarity in the department at that time, as there were no formal courses offered in archaeology. Kroeber was impressed by Heizer's organizational ability and the field techniques he had developed and encouraged him and provided the necessary funding for further fieldwork. Accordingly, between 1936 and 1939 Heizer directed a small student group in the excavation of a number of sites in Nevada and California, and, funded by the California Historical Society, he excavated for two summers, in 1940 and 1941, at Indian occupation sites at Drake's Bay. Though evidence of Drake's visit eluded him, he did recover part of the cargo of Cermeño's ship, the *San Agustín*, wrecked there in 1595. Between 1936 and 1941, therefore, Heizer and his associates had been able to establish the essential framework of Central California prehistory, tying it into an historical event.

At the time Heizer was a graduate student, there was no formal course of study for the Ph.D. degree. He attended seminars, read a great deal, learned from other students, and waited for Kroeber to tell him to take the written qualifying examination. In those days the qualifying examination took the form of 30 hours of written papers on such varied subjects as history and theory of anthropology, cultural history, linguistics, and American Indians, and the examination was spread over five days. Meeting Kroeber in the hall one day, he was told that he should take the examination, which would be held in two-weeks' time! His dissertation was not, surprisingly, an archaeological one, but a treatise on the subject of "Aboriginal Whaling in the Old and New Worlds." The selection of this topic was not so much one of his own choosing as that the objective of the Department at the time was to produce professionals with a broad interest in anthropology. He received his doctorate in 1941 and the publication resulting from the dissertation is a major compilation and indispensable reference work.

In 1940-41, he was appointed Instructor in anthropology at the University of Oregon. Later, during the war, he saw service in a naval shipyard at Richmond, California, helping to build Liberty Ships and AKA Attack Transports. In 1946, after a brief period as Instructor at UCLA, Heizer was invited to join the faculty of the Anthropology Department at Berkeley, where he taught and researched to the time of his death.

Heizer's first concern after joining the Berkeley faculty was with the archaeology and cultural history of California, and in 1947 he persuaded the authorities to establish the University of California Archaeological Survey. It remained under his direction until 1961 when, its main purpose fulfilled, it was reorganized and the research objectives broadened as the Archaeological Research Facility. Heizer remained Coordinator of the Facility until his retirement in 1976. Between 1947 and 1960 some 13,000 archaeological sites in California had been recorded, scores of prehistoric sites excavated, and over 150 articles or monographs published on the findings. Students trained by the Survey hold academic posts all over the country, and the organization served as a model for a number of similar state surveys. All this was done while holding down a full teaching load in the department.

In North America, where archaeology and ethnography have always been closely intertwined and culture-historic interpretations draw perhaps as much on archaeological material as they do on ethnographic, Heizer's long-standing interest in ethnographic matters and problems, as well as more specific archaeological ones, is understandable. Extraordinary, however, is the broad range of these interests, and he investigated almost everything that he considered might have direct or possible importance for archaeological interpretation. It is impossible to make more than brief mention of some of them here.

In ethnography he wrote extensively about

Indian material culture and behavior. Papers on plank canoes, fishhooks, and navigational and hunting practices on the Northwest Coast, arrow poisons and points, atlatls, basketry techniques, aboriginal shell currencies and trade, Indian vocabularies, and California population densities and settlement patterns poured from his pen and show something of the great range of his interests. As editor and member of the Advisory Committee for Volume 8 (*California*) of the *Handbook of North American Indians*, published a year before he died, he was able to ensure that the information it contained was as complete and accurate as possible.

His historical interests resulted in articles and monographs on the early Spanish explorers of the Coast, including Drake; on excavations at the California Missions and the Sutter Sawmill site where gold was first discovered in 1848, on Indian relationships with the Spanish, Mexican, and United States Governments, and on the unratified treaties of 1851-52.

His contributions to archaeology, both of the western United States and the discipline in general, are those for which he is best known. His work falls mostly into three main categories: that on western American archaeology (in particular of California and Nevada), that which he carried out in Meso-America, and his contributions to archaeological methods and theory, in particular in his investigation of new techniques and their potential for the discipline. To this end his work was often carried out in collaboration with colleagues in other disciplines and with his own students, and it resulted in some of his most significant publications. In particular must be mentioned his happy association with his friends Sherburne Cook of the Physiology Department, with whom he collaborated on population and nutritional studies; with Howell Williams of Geology on ancient heavy transport; with Philip Drucker at La Venta,

the Olmec center in Mexico; and with Fred Stross, a chemist working on analyses of archaeological materials.

Bob Heizer's three most important excavations in the West are probably Leonard Rockshelter, Lovelock Cave, and Humboldt Cave in the Humboldt Sink region of the Great Basin, where the first occupation level is dated to 9200 B.C. These were dry caves with a series of deep deposits in which were preserved very important artifacts of perishable materials such as basketry and wood, as well as many human coprolites—in Lovelock Cave in particular. The analytical teamwork on these coprolites has resulted in very precise knowledge of the changing dietary habits of the occupants through time as these kept pace with changing climatic conditions in the Basin. Another of his interests was petroglyphs, and his surveys and resulting jointly-authored publications are the definitive works on the rock engravings of California and the Great Basin, showing their association with game trails and hunting places.

Early Man sites were another of his interests, and he examined the claims made for some of these—Texas Street, Louisville, Gypsum Cave—or for human skeletal remains—with a thoroughness that generally left little doubt as to the accuracy or otherwise of such claims.

In 1956, his interest expanded to Meso-America and with Drucker and Squier he excavated at the great and probably earliest of the Pre-Classic ceremonial centers at La Venta, an island in the Tabasco lowlands not far from the Gulf of Mexico. The extensive ceremonial mounds and terraces, extending for over two kilometers, were mapped and excavated, and many outstanding features of Olmec art were discovered, including mosaic pavements of serpentine and dedicatory caches of jade objects. What interested Heizer most about the monumental stone structures and sculptures, including the large human heads,

was how and from where they had been brought to La Venta, a distance of more than 100 kilometers from the nearest source of stone. This initiated several field seasons with Howell Williams, resulting in the location of quarry sources for the stone at La Venta, as well as in the Valley of Mexico and Guatemala, and caused him to develop a world-wide interest in the transport of megalithic monuments and the methods of moving and erecting them. With his colleagues at the Lawrence Berkeley Laboratory, he completed a brilliant piece of research that identified the quarries on the Nile from which the stone for the Colossi of Memnon had come. He amassed a great deal of information on the subject of monumental building and the monograph on ancient heavy transport was well on the way to completion at the time of his death.

Bob was quick to examine, with typical thoroughness, the potential of the new methods and techniques that were beginning to become increasingly available to archaeologists from the 1950's onwards. But he also went out of his way to interest natural and physical scientists in developing additional ways in which prehistoric artifacts and settlements might be dated, material sources identified, and quantitative analyses and assessments applied to demographic patterning and prehistoric economies. The magnetometer was used to identify the presence of a structure within the pyramid at La Venta. Obsidian sources in the Sierras and in Meso-America and the resulting trade routes were investigated by X-ray fluorescence and neutron activation analysis, which was also applied to identify clay and quarry sources for pottery and stone; chemical analyses of archaeological residues resulted in estimates of settlement size and dispersal and decay rates of occupational debris. The volume, co-edited with Sherburne Cook, "The Application of Quantitative Methods in Archaeology," which followed from a symposium organized at the European

headquarters of the Wenner-Gren Foundation for Anthropological Research at Burg Wartenstein, Austria, was one of the first of its kind to stress the importance that quantitative studies would have in archaeology and remains an invaluable source of analytical techniques and dating methods.

His interests led him to publish also two bibliographies on replicative experiments in archaeology, as well as an edited volume of a series of carefully researched excerpts to show the development of man's study of his past. *The Archaeologist at Work* is another edited volume of significant excavation reports, reconstruction, and application of dating techniques in prehistoric and historic archaeology throughout the world.

The quantity and quality of his research and publications may in time tend to obscure his work and ability as a teacher. In this, however, he was equally successful and was an inspiring lecturer at all levels of instruction. His teaching ranged from North American and Meso-American archaeology to Californian Indians, archaeology and society, and science in archaeology, and he was equally as successful in field courses as he was in the classroom and seminars. He was always available to talk with students and found it especially stimulating when one of them propounded an original idea. His students were encouraged to broaden the base of archaeology by using the insight that comes from looking at prehistoric data through the eyes of another discipline. "Discovery," he said, "is a creative process and the person who devotes himself to a research subject and who is lucky enough to achieve new insights can really ask nothing more to feel successful and satisfied." He never spared himself and he expected his students to be equally as devoted to an archaeological objective as he was. When some failed to do so, this sometimes led to strained relations while those who "stood the pace" retained the greatest respect and affection for him.

Bob was not only active in research and teaching but he also found time for much university and public service. He was a member of various university committees, for example, on research and on the editorial board of the University Press, and he was also, for a time, Curator of North American archaeology in the Lowie Museum. He gave freely of his time to advise and help such organizations as the California Historical Society, the State Division of Mines, the National Park Service, and the State Division of Beaches and Parks, and he was a member of the Governor's Task Force on California Heritage Commission since 1972.

He was honored, and his work recognized, by being elected to the Society of Sigma Xi; he was twice a Fellow of the Guggenheim Foundation; he was a Fellow at the Center for Advanced Study in the Behavioral Sciences; and he was elected a member of the National Academy of Sciences in 1973. He received an honorary Doctor of Science degree from the University of Nevada in 1965.

Bob was a kind of scholar who will not be seen again for a long time. He was a great archaeologist to whom prehistory in the western states will forever be indebted. He was possessed of a rather rare sense of humor and could be extremely witty and good company. Critical of others, he was equally critical of himself and in some ways was a "loner." His friends remember him for his humor, kindness, and generosity, his students for the way he shared with them the excitement of new discoveries in the field, and his colleagues and students alike for the magnitude and depth of his scholarship and for the stimulus that he gave to the discipline in general.

J. DESMOND CLARK

Dept. of Anthropology
Univ. of California
Berkeley, CA 94720

**PUBLISHED WORKS OF
ROBERT FLEMING HEIZER**

ARTICLES AND MONOGRAPHS

1937

A Unique Type of Fishhook from Central California. *The Masterkey* 11:96-97.

Baked Clay Objects of the Lower Sacramento Valley, California. *American Antiquity* 3:34-50.

1938

Aconite Arrow Poison in the Old and New World. *Journal of the Washington Academy of Sciences* 28:358-364.

A Folsom-Type Point from Sacramento Valley. *The Masterkey* 12:180-182.

A Complete Atlatl Dart from Pershing County, Nevada. *New Mexico Anthropologist* 2:68-71.

An Inquiry into the Status of the Santa Barbara Spear-thrower. *American Antiquity* 4:137-141.

The Plank Canoe of the Santa Barbara Region, California. *Gothenburg Ethnographical Museum, Ethnological Studies* 7:193-227.

1939

Some Sacramento Valley-Santa Barbara Archaeological Relationships. *The Masterkey* 13:31-35.

An Introduction to the Archaeology of Central California. Sacramento Junior College, Dept. of Anthropology, Bulletin 2, 93 pp. (with J. B. Lillard and F. Fenenga).

Archaeological Horizons in Central California. *American Anthropologist* 41:378-399 (with F. Fenenga).

The Bulbed Enema Syringe and Enema Tube in the New World. *Primitive Man* 12:85-93.

1940

A Note on Folsom and Nepesta Points. *American Antiquity* 6:79-80.

Aboriginal Use of Bitumen by the California Indians. *California State Division of Mines Bulletin* 118, Part I:74-75.

Animal Ceremonialism in Central California in the Light of Archaeology. *American Anthropologist* 42:587-603 (with G. W. Hewes).

The Botanical Identification of Northwest Coast Tobacco. *American Anthropologist* 42:704-706.

The Introduction of Monterey Shells to the Indians of the Northwest Coast. *Pacific Northwest Quarterly* 31:399-402.

The Frameless Plank Canoe of the California Coast. *Primitive Man* 13:80-89.

1941

A Californian Messianic Movement of 1801 Among the Chumash. *American Anthropologist* 43:128-129.

The Distribution and Name of the Chumash Plank Canoe. *The Masterkey* 15:59-61.

The Use of Plants for Fish-poisoning by the California Indians. *Leaflets in Western Botany* 3:43-44.

Oregon Prehistory: Retrospect and Prospect. *Commonwealth Review* 23:30-40.

The Plank Canoe (*dalca*) of Southern Chile. *The Masterkey* 15:105-107.

Alexander S. Taylor's Map of California Indian Tribes, 1864. *California Historical Society Quarterly* 20:171-180.

Aboriginal Trade between the Southwest and California. *The Masterkey* 15:185-188.

The Direct Historical Approach in California Archaeology. *American Antiquity* 7:98-122.

The Origin and Authenticity of an Atlatl and an Atlatl Dart from Lassen County, California. *American Antiquity* 7:134-146 (with F. Fenenga).

California Earthquakes of the Mission Period, 1769-1838. *California Journal of Mines and Geology* 37:219-222.

Archaeological Evidence of Sebastián Rodríguez Cermeño's California Visit in 1595. *California Historical Society Quarterly* 20:315-328.

1942

Walla Walla Indian Expeditions to the Sacramento Valley, 1846-1848. *California Historical Society Quarterly* 21:1-7.

Archaeological Evidence of Sebastián Rodríguez Cermeño's California Visit in 1595. (Same title as above [1941] published separately by the California Historical Society, with an introduction by

A. L. Kroeber and a report on the metal spikes by C. G. Fink and E. P. Polushkin.)

Francis Drake's California Anchorage in the Light of the Indian Language Spoken There. *Pacific Historical Review* 11:213-217 (with W. W. Elmendorf). (Reprinted 1975 in *Elizabethan California*, Ballena Press, Ramona, California.)

Ancient Grooved Clubs and Modern Rabbitsticks. *American Antiquity* 8:41-56.

Further Notes on the Susanville Atlatl. *American Antiquity* 8:120-122 (with F. Fenenga).

A Decorated Mortar in Columbia Valley Art Style. *American Anthropologist* 44:534-537.

A Sketch of the Hopi in 1828. *The Masterkey* 16:193-199.

[The Archaeology of] Massacre Lake Cave, Tule Lake Cave, and Shore Sites. In: *Archaeological Researches in the Northern Great Basin*, by L. S. Cressman, pp. 121-134. Carnegie Institution of Washington Publication No. 538.

1943

A Pacific Eskimo Invention in Whale Hunting in Historic Times. *American Anthropologist* 45:120-122.

Catching Whales with Pathogenic Bacilli. *Ciba Symposia* 5:1486-1488.

Fired Clay Figurines in Central and Northern California. *American Antiquity* 9:199-207 (with R. K. Beardsley).

Aconite Poison Whaling in Asia and America: An Aleutian Transfer to the New World. Washington, D.C.: Bureau of American Ethnology Bulletin No. 133:415-468.

1944

The Hopi Snake Dance: Fact and Fancy. *Ciba Symposia* 5:1681-1684. (Reprinted in *Readings in Anthropology*, A. Hoebel, J. Jennings, and E. Smith, eds., pp. 266-269, New York, 1954.)

The Use of the Enema by the Aboriginal American Indians. *Ciba Symposia* 5:1686-1693.

The Use of Narcotic Mushrooms by Primitive Peoples. *Ciba Symposia* 5:1713-1716.

Report on Archaeological Survey of Takli Island, Alaska. In: *The Anthropology of Kodiak Island*, by A. Hrdlicka, pp. 131-133. Philadelphia: Wistar Institute Press.

Artifact Transport by Migratory Animals and Other Means. *American Antiquity* 9:395-400.

The Use of "Poison Gases" in Warfare by the American Indians. *Ciba Symposia* 5:1906-1907.

Mines and Quarries of the Indians of California. *California Journal of Mines and Geology* 40:291-359 (with A. E. Treganza). (Reprinted 1972 by Ballena Press, Ramona, California.)

1945

Introduced Spearthrowers (Atlatls) in California. *The Masterkey* 19:109-112.

Honey-dew "Sugar" in Western North America. *The Masterkey* 19:140-145.

1946

The Occurrence and Significance of Southwestern Grooved Axes in California. *American Antiquity* 11:187-193.

1947

Progress Report on American Philosophical Society Research Grant for Study of Uyak Site Collections. *American Philosophical Society Yearbook* 1946:149-150.

The Quantitative Investigation of Aboriginal Sites: Analyses of Human Bone. *American Journal of Physical Anthropology* (n.s.) 5:201-220 (with S. F. Cook).

Archaeological Investigation of Sutter Sawmill Site in 1947. *California Historical Society Quarterly* 26:134-159.

Petroglyphs from Southwestern Kodiak Island. *Proceedings of the American Philosophical Society* 91:284-293.

Historical North Pacific Culture Influences in the Santa Barbara Region. *The Masterkey* 21:150-152.

Notes and News, Pacific Coast Area. *American Antiquity* 13:91-92.

Observations on Archaeological Sites in Topanga Canyon, California. *University of California Publications in American Archaeology and Ethnology* 44:237-258 (with E. Lemert).

An Early 19th Century California (?) Copper Medallion. *California Historical Society Quarterly* 26:349-350.

1948

Remarks on the Prone Burial Position in China and North America. *American Antiquity* 13:249-250.

Survey of Building Structures on the Sierran Gold Belt, 1848-1870. In: *Geologic Guidebook Along Highway 49: Sierran Gold Belt*, pp. 91-164. California Division of Mines Bulletin 144 (with F. Fenenga).

The California Archaeological Survey: Establishment, Aims, and Methods. Berkeley: University of California Archaeological Survey Report No. 1:1-8.

Pacific Coast Notes and News. *American Antiquity* 14:155-158.

A Bibliography of Ancient Man in California. Berkeley: University of California Archaeology Survey Report No. 2:1-22.

Human Sacrifices Among the Aztecs. *Ciba Symposia* 10:922-923.

1949

The California Archaeological Survey. *American Antiquity* 14:222-223.

Pottery from the Southern Eskimo Region. *Proceedings of the American Philosophical Society* 93:48-56.

The Archaeology of Central California. I: The Early Horizon. *University of California Anthropological Records* 12:1-84.

A Bibliography of the Archaeology of California. Berkeley: University of California Archaeological Survey Report No. 4:1-27.

Fish Poisons. Washington, D.C.: Bureau of American Ethnology Bulletin 143 (5):277-281.

Curved Single-Piece Fishhooks of Shell and Bone in California. *American Antiquity* 15:89-96.

The Archaeology of Central California: A Comparative Analysis of Human Bone from Nine Sites. *University of California Anthropological Records* 12:85-112 (with S. F. Cook).

University of California Correspondence Course (Anthropology XB 1) in General Anthropology, Parts I and II, 30 lectures. Mimeographed (Revised and reissued May 1953.)

1950

The Stanford Skull, a Probable Early Man from Santa Clara County, California. Berkeley: University of California Archaeological Survey Report No. 6: pp. 1-18 (with T. D. McCown).

An Unusual Decorated Steatite Slab from Northwestern California. *American Antiquity* 15:252-254.

Pacific Coast Archaeological Notes and News. *American Antiquity* 15:265-268.

Observations on Early Man in California. *Kroeber Anthropological Society Papers* No. 1:28-33. (Also printed in *University of California [Berkeley] Archaeological Survey Report No. 7:5-9*.)

On the Methods of Chemical Analysis of Bone as an Aid to Prehistoric Culture Chronology. Berkeley: University of California Archaeological Survey Report No. 7:10-14.

Observations on Historic Sites and Archaeology in California. Berkeley: University of California Archaeological Survey Report No. 9:1-5.

Archaeology of CCo-137, the "Concord Man" Site. Berkeley: University of California Archaeological Survey Report No. 9:6-13.

Kutsavi, a Great Basin Indian Food. *Kroeber Anthropological Society Papers* No. 2:35-41.

1951

The Sickles in Aboriginal Western North America. *American Antiquity* 16:247-252.

Note on the Occurrence in Shellmounds and Use of Jade by the Monterey County Indians. Sacramento: California State Division of Mines, Mineral Information Service 4(8)6.

The Indians of California. Syllabus for Anthropology XB 137. University of California Extension Division, 60 pp. (photolithographed). (Reprinted, with additions, 1956, 1958, 1962, 1965. 65 pp.)

An Assessment of Certain Nevada, California, and Oregon Radiocarbon Dates. In: *Radiocarbon Dates*, pp. 23-25. Society for American Archaeology Memoir No. 8.

University of California Correspondence Course (Anthropology XB 137), "Indians of California." 15 lectures (mimeographed).

A Prehistoric Yurok Ceremonial Site. Berkeley: University of California Archaeological Survey Report No. 11:1-4.

The Physical Analysis of Nine Indian Mounds of the Lower Sacramento Valley. University of California Publications in American Archaeology and Ethnology 40:281-312.

[Editor of] The French Scientific Expedition to California, 1877-1879, *and* Observations on the Sculptured Stone Fetishes in Animal Form Discovered on San Nicolas Island (California). Berkeley: University of California Archaeological Survey Report No. 12:1-13.

Preliminary Report on the Leonard Rockshelter Site, Pershing County, Nevada. *American Antiquity* 17:89-98.

Indians of the San Francisco Bay Area. In: *Geologic Guidebook of the San Francisco Bay Counties*. California State Division of Mines Bulletin 154:39-56.

Syllabus and Instructions for Course Anthropology I (16 pp., map). Berkeley: University of California Press (with T.D. McCown).

A Cave Burial from Kern County. Berkeley: University of California Archaeological Survey Report No. 10:29-36.

1952

Incised Slate Figurines from Kodiak Island, Alaska. *American Antiquity* 17:266.

The American Indian. In: *One America*, by F. J. Brown and J. S. Roucek, pp. 27-31. New York: Prentice Hall.

A Survey of Cave Archaeology in California. Berkeley: University of California Archaeological Survey Report No. 15:1-12.

A Review of Problems in the Antiquity of Man in California. Berkeley: University of California Archaeological Survey Report No. 16:3-17.

A Carved Antler Human Face from Umatilla, Oregon. *American Antiquity* 17:68.

Archaeological Exploration of Sixteenth Century Indian Mounds at Drake's Bay. *California Historical Quarterly* 31:98-108 (with C. W. Meighan). (Reprinted in *California Historical Society, Special Publication No. 25:73-81*, San Francisco, 1953.)

The Fossilization of Human Bone: Organic Components and Water. Berkeley: University of California Archaeological Survey Report No. 17:1-24 (with S. F. Cook).

A Prehistoric Sling from Lovelock Cave, Nevada. *American Antiquity* 18:139-147 (with I. W. Johnson).

Fluorine and Other Chemical Tests of Some North American Human and Fossil Bones. *American Journal of Physical Anthropology* 10:289-303 (with S. F. Cook).

The Mission Indian Vocabularies of Alphonse Pinart. Berkeley: University of California Anthropological Records 15:1-84.

Notes on Koniag Material Culture. *Anthropological Papers of the University of Alaska* 1:11-21.

1953

Long Range Dating in Archaeology. In: A. L. Kroeber (Chairman), *Anthropology Today*, pp. 3-42. (Reprinted in part in *Readings in Anthropology*, A. Hoebel, J. Jennings, and E. Smith, pp. 54-58, New York, 1954.)

A Dog Burial from the Sacramento Valley. *American Antiquity* 18:263-264 (with W. G. Haag).

Additional Surface Intaglio and Boulder Outline Designs in the Old and New Worlds. Berkeley: University of California Archaeological Survey Report No. 20:30-32.

Sacred Rain Rocks of Northern California. Berkeley: University of California Archaeological Survey Report No. 21:33-38.

Aboriginal Fish Poisons. *Bureau of American Ethnology Bulletin* 151, *Anthropological Paper* No. 38:225-283.

Aboriginal Navigation Off the West Coasts of Upper and Lower California. *Bureau of American Ethnology Bulletin* 151, *Anthropological Paper* No. 39:285-311 (with W. C. Massey).

Some Archaeological Sites and Cultures of the Central Sierra Nevada. Berkeley: University of California Archaeological Survey Report No. 21, 42 pp. (with A. B. Elsasser).

The Present Status of Chemical Methods for Dating Prehistoric Bone. *American Antiquity* 18:354-358 (with S. F. Cook).

Sites Attributed to Early Man in California. Berkeley: University of California Archaeological Survey Report No. 22:1-4.

"Capay Man," an Ancient Central California Indian Burial. Berkeley: University of California Archaeological Survey Report No. 22:24-26 (with S. F. Cook).

Additional Data on the Farmington Complex, a Stone Implement Assemblage of Probable Early Postglacial Date from Central California. Berkeley: University of California Archaeological Survey Report No. 22:28-38 (with A. E. Treganza).

Additional Note on Chinese Soapstone Carvings from Mesoamerica. *American Antiquity* 19:81.

[Preface to] The Plate of Brass. California Historical Society Special Publication No. 25:i-vi (with A. Chickering).

Techniques and Implements of the American Whale-Fishery; from an Early Japanese Account. *California Historical Quarterly* 32:225-229.

[Editor and part author of] The Archaeology of the Napa Region. University of California Anthropological Records 12:225-358.

Archaeological Dating by Chemical Analysis of Bone. *Southwestern Journal of Anthropology* 9:231-238 (with S. F. Cook).

1954

Comments on the Piltdown Remains. *American Anthropologist* 56:92-94 (with S. F. Cook).

Summary of address given before the California Historical Society, November 12, 1953. *California Historical Quarterly* 33:85-88.

Notes on the Utah Utes by Edward Palmer, 1866-1867. University of Utah Anthropological Papers No. 17:1-8. (Reprinted in *Utah Archaeology* 8(3):7-14, 1962.)

1955

Two Chumash Legends. *Journal of American Folklore* 68:34, 56-57.

California Indian Linguistic Records: The Mission Indian Vocabularies of H. W. Henshaw. University of California Anthropological Records 15:85-202.

Indian Occupation in Southern California. In: *Geology of Southern California*, R. Jahns, ed., pp. 45-53. California State Division of Mines Bulletin 170.

Executions by Stoning Among the Sierra Miwok and Northern Paiute. *Kroeber Anthropological Society Papers* No. 12:45-51.

Additional Data on Fired Clay Human Figurines from California. *American Antiquity* 21:181-185 (with D. M. Pendergast).

[Preface to] Fort Ross: A Study in Historical Archaeology. Berkeley: University of California Archaeological Survey Report No. 23:1-3 (with T. D. McCown).

[Preface to] Sonoma Mission: An Historical and Archaeological Study of Primary Constructions, 1823-1913. Berkeley: University of California Archaeological Survey Report No. 27:i-iii (with T. D. McCown).

Primitive Man as an Ecologic Factor. *Kroeber Anthropological Society Papers* No. 13:1-31. (Reprinted in *Bobbs-Merrill Reprint Series in the Social Sciences* No. A-111, 1962.)

1956

Archaeology of the Uyak Site, Kodiak Island, Alaska. University of California Anthropological Records 17:1-200.

[Editor of] Archaeological Investigations on Santa Rosa Island in 1901, by P. M. Jones. University of California Anthropological Records 17:201-280 (with A. B. Elsasser).

Recent Cave Explorations in the Lower Humboldt Valley, Nevada. Berkeley: University of California Archaeological Survey Report No. 33:50-57.

The Archaeology of Humboldt Cave, Churchill County, Nevada. University of California Publications in American Archaeology and Ethnology 47:1-190 (with A. D. Krieger).

Gifts for the Jaguar God. *National Geographic Magazine* CX(3):366-375 (with P. Drucker).

California Settlement Patterns. In: *Prehistoric Settlement Patterns in the New World*, G. R. Willey, ed., pp. 32-44. Viking Fund Publications in Anthropology No. 23 (with M. A. Baumhoff).

Some Aspects of the Quantitative Approach in Archaeology. *Southwestern Journal of Anthropology* 12:229-248 (with S. F. Cook).

The First Dendrochronologist. *American Antiquity* 22:186-188.

1957

[Preface to] *Bibliography of Nevada Archaeology*, by G. L. Grosscup, pp. 1-3. Berkeley: University of California Archaeological Survey Report No. 36.

A Steatite Whale Figurine from San Nicolas Island. Berkeley: University of California Archaeological Survey Report No. 38:10.

An Unusual Antler Zooform Club from Northwestern California. Berkeley: University of California Archaeological Survey Report No. 38:17-18.

Radiocarbon Dates from La Venta, Tabasco. *Science* 126:72-73 (with P. Drucker and R. Squier). (Reprinted in *Boletín de Centro de Investigaciones Antropológicas de México* 4:31-33.)

The Materials of Archaeology. *Encyclopaedia Britannica* (1957 ed.), Vol. 2, pp. 235-237.

1958

Aboriginal California and Great Basin Cartography. Berkeley: University of California Archaeological Survey Report No. 41:1-9.

Prehistoric Central California: A Problem in Historical-Developmental Classification. Berkeley: University of California Archaeological Survey Report No. 41:19-26.

Archaeological Investigation of Cuicuilco, Valley of Mexico, 1957. *Science* 127:232-233 (with J. A. Bennyhoff).

[Dedicatory Preface] R. H. Lowie. Berkeley: University of California Archaeological Survey Report No. 42:i-ii.

Outland Coiled Basketry from the Caves of Western Central Nevada. Berkeley: University of California Archaeological Survey Report No. 42:49-59 (with M. A. Baumhoff).

Cross-Dating Great Basin Sites by Californian Shell Beads. Berkeley: University of California Archaeological Survey Report No. 42:60-92 (with J. A. Bennyhoff).

The Lagomarsino Petroglyph Group (Site 26-St-1) Near Virginia City, Nevada. Berkeley: University of California Archaeological Survey Report No. 43, Part II, pp. 1-17 (with M. A. Baumhoff and A. B. Elsasser). (Reprinted in *Prehistoric Rock Art of Nevada and Eastern California*, 1962.)

Salt in California Indian Culture. *California Division of Mines Bulletin* 175:103-104.

Excavations at La Venta, 1955. *Bulletin of the Texas Archeological Society* 28:98-110.

Radiocarbon Dates from California of Archaeological Interest. Berkeley: University of California Archaeological Survey Report No. 44, Part I, pp. 1-16.

1959

The California Indians (Part 1). *The California Monthly* 69(6):16-20.

The California Indians (Part 2). *The California Monthly* 69(7):19-22.

The California Indians (Part 3). *The California Monthly* 69(8):13-15.

Great Basin Petroglyphs and Prehistoric Game Trails. *Science* 129:904-905 (with M. A. Baumhoff). (Reprinted in *Utah Archaeology* 9[1]:2-5, March 1963.)

Excavations at La Venta, Tabasco, 1955. *Bureau of American Ethnology Bulletin* 170, 312 pp. (with P. Drucker and R. J. Squier).

New Evidence of Antiquity of Tepexpan and Other Human Remains from the Valley of Mexico. *Southwestern Journal of Anthropology* 15:36-42 (with S. F. Cook). (Reprinted in *Ancient Mesoamerica*, J. A. Graham, ed., pp. 32-38. Peek Publications, 1966.)

Some Unexploited Possibilities in Ceramic Analysis. *Southwestern Journal of Anthropology* 15:308-316 (with M. A. Baumhoff).

Obituary: Edward Winslow Gifford, 1887-1959. *American Antiquity* 25:257-259.

[Dedicatory Preface] Edward Winslow Gifford, 1887-1959: An Appreciation. Berkeley: University of California Archaeological Survey Report No. 47:i-iii.

The Chemical Analysis of Fossil Bone: Individual Variation. *American Journal of Physical Anthropology* 17:109-115 (with S. F. Cook).

1960

Notes on Some Paviotso Personalities and Material Culture. Nevada State Museum Anthropological Papers No. 2, 7 pp., 9 pls.

Olmec Lithic Sources. *Boletín del Centro de Investigaciones Antropológicas de México*, No. 6:16-17 (with H. Williams).

A Study of the Milpa System of La Venta Island and its Archaeological Implications. *Southwestern Journal of Anthropology* 16:36-45 (with P. Drucker).

A San Nicolas Island Twined Basketry Water Bottle. Berkeley: University of California Archaeological Survey Report No. 50:1-3.

Some Prehistoric Wooden Objects from San Nicolas Island. Berkeley: University of California Archaeological Survey Report No. 50:4-5.

Some Prehistoric Bullroarers from California Caves. Berkeley: University of California Archaeological Survey Report No. 50:5-9.

California Population Densities, 1770 and 1950. Berkeley: University of California Archaeological Survey Report No. 50:9-12.

Two Early Representations of California Indians. Berkeley: University of California Archaeological Survey Report No. 50:12-13.

The Aleut Sea Otter Hunt in the Late Nineteenth Century. *Anthropological Papers of the University of Alaska* 8:131-135.

[Editor of] *The Application of Quantitative Methods in Archaeology*. Viking Fund Publications in Anthropology No. 28 (358 pp.) (with S. F. Cook).

Physical Analysis of Habitation Residues. In: *The Application of Quantitative Methods in Archaeology*, by R. F. Heizer and S. F. Cook, pp. 93-125. Viking Fund Publications in Anthropology 28.

Specific and Generic Characteristics of Olmec Culture. *Actas del XXXIII Congreso Internacional de Americanistas*, San Jose, Costa Rica, 1958, pp. 178-182.

Agriculture and the Theocratic State in Lowland Southeastern Mexico. *American Antiquity* 26: 215-222. (Reprinted in: *Ancient Mesoamerica*, J. A. Graham, ed., pp. 119-126. Peek Publications, 1966.)

1961

Original Accounts of the Lone Woman of San Nicolas Island. Berkeley: University of California Archaeological Survey Report No. 55 (with A. B. Elsasser). (Reprinted in: *Aboriginal California: Three Studies in Culture History*, pp. 121-181. University of California Press, 1963; reprinted 1973 by Ballena Press, Ramona, California.)

Obituary: Alfred Louis Kroeber, 1876-1960. *Man* 61:107.

Obituary: Alfred Louis Kroeber, 1876-1960. *The Masterkey* 35:106-107.

Scraper Plane Burins: A Newly Recognized Tool Type. *The Masterkey* 35:146-150 (with H. Kelley).

The Archaeology of Two Sites at Eastgate, Churchill County, Nevada: Part I, Wagon Jack Shelter. *University of California Anthropological Records* 20(4):119-138 (with M. A. Baumhoff).

Inferences on the Nature of Olmec Society Based upon Data from the La Venta Site. In: *A. L. Kroeber Memorial Volume*, pp. 43-57. Berkeley: Kroeber Anthropological Society.

The Materials Gathered in California in 1877-1879 by Léon de Cessac, now in the Musée de l'Homme, Paris. *Year Book of the American Philosophical Society*, 1961, pp. 508-510.

1962

[Editor of] *The Rancho La Brea Skull*, by A. L. Kroeber (posthumous paper). *American Antiquity* 27:416-417.

[Co-editor of] Two Papers on the Aboriginal Ethnography of California, by A. L. Kroeber. Berkeley: University of California Archaeological Survey Report No. 56 (with D. Hymes).

Burins and Bladelets in the Cessac Collection from Santa Cruz Island, California. Proceedings of the American Philosophical Society 106:94-105 (with H. Kelley).

Village Shifts and Tribal Spreads in California. The Masterkey 36:60-67.

The California Indians: Archaeology, Varieties of Culture, Arts of Life. California Historical Society Quarterly 41:1-28.

Chemical Analysis of the Hotchkiss Site (CCo-138). Berkeley: University of California Archaeological Survey Report No. 57:1-24 (with S. F. Cook).

[Foreword to] Bows and Arrows, by S. T. Pope, pp. i-iv. Berkeley: University of California Press.

The Background of Thomsen's Three-Age System. Technology and Culture 3:259-266.

Identification of *Distichlis* Salt Used by California Indians. The Masterkey 36:146-148 (with H. Rapoport).

Early California Indians. The Southern California Rancher, Nov.-Dec., p. 34.

1963

Obituary of Alfred Louis Kroeber. Encyclopaedia Britannica, 14th ed., p. 502.

Maidu. Encyclopaedia Britannica, 14th ed., p. 638.

The Possible Sociopolitical Structure of the La Venta Olmecs. Proceedings of the XXXIV International Congress of Americanists, Vienna, 1960, pp. 310-317.

La Mission de Léon de Cessac en Californie, 1877-1879. Objects et Mondes, La Revue de Musée de l'Homme 3:17-34 (with H. Reichlen).

Geologic Notes on the Idolo de Coatlichan. American Antiquity 29:95-98 (with H. Williams).

[Foreword to] Cultural and Natural Areas of Native North America, by A. L. Kroeber, pp. v-ix. Berkeley: University of California Press (fourth printing).

[Co-editor and part author]: Aboriginal California: Three Studies in Culture History. Berkeley: University of California Press, 181 pp. (with A. B. Elsasser).

The Archaeology of Bowers Cave, Los Angeles County, California. Berkeley: University of California Archaeological Survey Report No. 59:1-43 (with A. B. Elsasser).

[Preface to] Sturgeon Hooks of Eurasia, by G. de Rohan Csermak, pp. vii-ix. Viking Fund Publications in Anthropology No. 35.

The Western Coast of North America. In: Prehistoric Man in the New World, J. Jennings and E. Norbeck, eds., pp. 117-148. Chicago: University of Chicago Press.

Domestic Fuel in Primitive Society. Journal of the Royal Anthropological Institute 93:186-194.

The Scientific Expedition of Léon de Cessac to California, 1877-1879. Berkeley: University of California Archaeological Survey Report No. 61:9-22 (with H. Reichlen).

1964

[Dedicatory preface] Alfred Mettraux. Berkeley: University of California Archaeological Survey Report No. 61:7-8.

Archaeology of Hum-67, the Gunther Island Site in Humboldt Bay, California. Berkeley: University of California Archaeological Survey Report No. 62:5-122 (with A. B. Elsasser).

California Archaeology: Its Development, Present Status, and Future Needs. The Masterkey 38:84-90.

The Archaeological Potential of the Coast Yuki. Berkeley: University of California Archaeological Survey Report No. 63:45-83 (with H. Thompson). Neutron Activation Analysis of Some Cuicuilco and Teotihuacán Pottery: Archaeological Interpretation of Results. American Antiquity 30:348-350 (with J. A. Bennyhoff).

Some Interim Remarks on the Coe-Stuckenrath Review. Kroeber Anthropological Society Papers No. 31:45-50.

Civil Rights in California in the 1850's—a Case History. Kroeber Anthropological Society Papers No. 31:129-137.

1965

The Quantitative Approach to the Relation Between Population and Settlement Size. Berkeley: University of California Archaeological Survey Report No. 64:1-93 (with S. F. Cook).

A Preceramic Stone Tool Collection from Viscachani, Bolivia. *Nawpa Pacha*, No. 3:107-113 (with T. Patterson).

Indians and Abalone Shells. *California Monthly* 75(9):14-15.

Lewisville—Ancient Campsite or Wood Rat Houses? *Southwestern Journal of Anthropology* 21:155-165 (with R. Brooks).

Notes on Colossal Head No. 2 from Tres Zapotes. *American Antiquity* 31:102-104 (with T. Smith and H. Williams).

Studies on the Chemical Analysis of Archaeological Sites. University of California Publications in Anthropology 2: pp. 1-102 (with S. F. Cook).

Postglacial Climate and Archaeology in the Desert West. In: *The Quaternary of the United States*, H. E. Wright and D. G. Frey, eds., pp. 697-707. Princeton: Princeton University Press (with M. A. Baumhoff).

[Foreword to] *The Rock Paintings of the Chumash*, by C. Grant, pp. vii-ix. Berkeley: University of California Press.

Sources of Rocks Used in Olmec Sculpture. Berkeley: University of California Archaeological Research Facility Contribution No. 1:1-40 (with H. Williams).

Geological Notes on the Ruins of Mitla and Other Oaxacan Sites, Mexico. Berkeley: University of California Archaeological Research Facility Contribution No. 1:41-54 (with H. Williams).

Stones Used for Colossal Sculpture at or Near Teotihuacán. Berkeley: University of California Archaeological Research Facility Contribution No. 1:55-70 (with H. Williams).

Olmec Sculpture and Stone-Working: A Bibliography. Berkeley: University of California Archaeological Research Facility Contribution No. 1: 71-88 (with T. Smith).

Notes on Mesoamerican Obsidians and Their Significance in Archaeological Studies. Berkeley: University of California Archaeological Research Facility Contribution No. 1:94-103 (with H. Williams and J. Graham).

Problems in Dating Lake Mojave Artifacts. *The Masterkey* 39:125-134.

Site Surveys in California or a California Site Survey? Los Angeles: University of California Archaeological Survey Archaeological Newsletter No. 9:5-11. (Reprinted 1972, Berkeley: University of California Archaeological Survey Report No. 75.)

1966

The Ophir Skull from Virginia City, Nevada. Berkeley: University of California Archaeological Survey Report No. 66:85-99 (with P. Reichlen).

[Commentary on] W. R. Coe and Robert Stuckenrath's Review of Excavations at La Venta, Tabasco, 1955. *Kroeber Anthropological Society Papers* No. 33:37-70 (with P. Drucker).

Salvage and Other Archaeology. *The Masterkey* 40(2):54-60.

Ancient Heavy Transport: Methods and Achievements. *Science* 153:821-830. (Reprinted in *The Oregon Science Teacher* 8[6]:17-26, 1967.)

[Compiler and editor of] C. Hart Merriam, *Ethnographic Notes on California Indian Tribes*. Berkeley: University of California Archaeological Survey Report No. 68, Part I, pp. 1-166.

Excavation of Two Northwestern California Coastal Sites. Berkeley: University of California Archaeological Survey Report No. 67:1-149 (with A. B. Elsasser).

Plank Canoes of South and North America. *Kroeber Anthropological Society Papers* No. 35: 22-39.

1967

Analysis of Human Coprolites from a Dry Nevada Cave. Berkeley: University of California Archaeological Survey Report No. 70:1-20.

[Preface to] Preliminary Examination of Prehistoric Human Coprolites from Four Western Nevada Caves, by N. L. Roust, pp. 49-52. Berkeley: University of California Archaeological Survey Report No. 70.

General Comments on Papers. In: The Current Status of Anthropological Research in the Great Basin: 1964. Reno: Desert Research Institute Technical Report Series S-H, (pp. 239-248).

Early Day Whale Hunting with Poison. *Alaska Sportsman* 33(7):19-20.

[Compiler and editor of] C. Hart Merriam, *Ethnographic Notes on California Indian Tribes: Part II, Ethnological Notes on Northern and Southern California Indian Tribes*. Berkeley: University of California Archaeological Survey Report No. 68, Part II, pp. 167-266.

A Reconsideration of the Age of the La Venta Site. Berkeley: University of California Archaeological Research Facility Contribution No. 3:1-24 (with R. Berger and J. A. Graham).

[Compiler and editor of] C. Hart Merriam, *Ethnographic Notes on California Indian Tribes: Part III, Ethnological Notes on Central California Indian Tribes*. Berkeley: University of California Archaeological Survey Report No. 68, Part III, pp. 267-448.

Analysis of Two Low Relief Sculptures from La Venta. Berkeley: University of California Archaeological Research Facility Contribution No. 3: 25-55.

Man's Antiquity in North America: Views and Facts. *Quaternaria* 9:225-235 (with J. A. Graham).

1968

Archaeology of South Fork Rockshelter (NV-El-11). Elko County, Nevada. Berkeley: University of California Archaeological Survey Report No. 17: 1-58 (with M. A. Baumhoff and C. W. Clewlow).

Projectile Points from Site NV-Ch-15, Churchill County, Nevada. Berkeley: University of California Archaeological Survey Report No. 71:59-88 (with C. W. Clewlow).

The La Venta Fluted Pyramid. *Antiquity* XLII: 52-56 (with P. Drucker).

A Bibliography of Aboriginal Whaling. *Journal of the Society for the Bibliography of Natural History* 5, Part 7:344-362. British Museum (Natural History).

Suggested Change in System of Site Designations. *American Antiquity* 33:254.

Relationships among Houses, Settlement Areas, and Population in Aboriginal California. In: *Settlement Archaeology*, K.-C. Chang, ed., pp. 79-116. Palo Alto: National Press (with S. F. Cook).

[Preface to] *Village Names in Twelve California Mission Records*, by C. H. Merriam, pp. i-ii. R. F. Heizer, assemb. and ed. Berkeley: University of California Archaeological Survey Report No. 74.

[Preface to] *Papers on Archaeology of the Western Great Basin*. Berkeley: University of California Archaeological Survey Report No. 73:i-iii.

One of the Oldest Known California Indian Baskets. *The Masterkey* 42:70-74.

Migratory Animals as Dispersal Agents of Cultural Materials. *Science* 161:914-915.

Investigations at La Venta, 1967. Berkeley: University of California Archaeological Research Facility Contribution No. 5:1-34 (with P. Drucker and J. A. Graham).

Analysis of American Obsidians by X-Ray Fluorescence and Neutron Activation Analysis. Berkeley: University of California Archaeological Research Facility Contribution No. 5:59-80 (with F. Stross, J. R. Weaver, G. E. A. Wyld, and J. A. Graham).

"Finger-printing" of Some Mesoamerican Obsidians. Berkeley: University of California Archaeological Research Facility Contribution No. 5: 81-100 (with R. N. Jack).

Notes on the Papalhuapa Site, Guatemala. Berkeley: University of California Archaeological Research Facility Contribution No. 5:101-126 (with J. A. Graham).

The 1968 Investigations at La Venta. Berkeley: University of California Archaeological Research Facility Contribution No. 5:127-203 (with J. A. Graham, L. K. Napton, and others).

Archaeological Research in Peru and Bolivia. *National Geographic Society Research Reports for 1963*:127-134 (with H. Williams).

New Observations on La Venta. In: *Dumbarton Oaks Conference on the Olmec*, E. P. Benson, ed., pp. 9-40. Washington, D.C.: Dumbarton Oaks Research Library.

Investigaciones de 1967 y 1968 en La Venta. Instituto Nacional de Antropología e Historia, México. Boletín No. 33 (September), pp. 21-28 (with P. Drucker and J. A. Graham).

1969

[Editor of] *San Nicolas Island Archaeology in 1901* by P. M. Jones. *The Masterkey* 43:84-98.

Biological and Cultural Evidence from Prehistoric Coprolites. *Science* 165:563-568 (with L. K. Napton).

Introduction. In: *Archaeological and Paleobiological Investigations in Lovelock Cave, Nevada*, L. K. Napton, ed., pp. i-iv. *Kroeber Anthropological Society Special Publication No. 2* (with L. K. Napton).

University of California (Berkeley) Work in Nevada Archaeology, 1969. *Nevada Archaeological Survey Reporter* 3(5):3-4.

The Great "Stela" of La Venta. *Jarbuch für Prähistorische und Ethnographische Kunst*, band 22, 1966/1969, pp. 48-52.

Catalogue of the C. Hart Merriam Collection of Data Concerning California Tribes and Other American Indians. Berkeley: University of California Archaeological Research Facility, 80 pp.

1970

Magnetometer Evidence of a Structure Within the La Venta Pyramid. *Science* 167:1488-1490 (with F. Morrison, J. Benevente, and C. Clewlow).

Recollections of Being a Student at Berkeley. In: *There Was Light*, Irving Stone, ed., pp. 207-213. New York: Doubleday and Co.

The Anthropology of Prehistoric Great Basin Coprolites. In: *Science in Archaeology*, D. Brothwell and E. Higgs, eds., pp. 244-250. London: Thames and Hudson.

[Editor of] *An Anthropological Expedition of 1913, or Get it Through Your Head, or Yours for the Revolution—Correspondence Between A. L. Kroeber and L. L. Loud, July 12-October 31, 1913*. Berkeley: University of California Archaeological Research Facility (39 pp.).

Environment and Culture: The Lake Mohave Case. *The Masterkey* 44:68-76.

How Accurate Were California Indians With the Bow and Arrow? *The Masterkey* 44:109-111.

Ethnographic Notes on the Northern Paiute of the Humboldt Sink, West Central Nevada. In: *Languages and Cultures of Western North America*, E. H. Swanson, ed., pp. 232-245. Pocatello: Idaho State University Press.

A Bibliography of California Archaeology. Berkeley: University of California Archaeological Research Facility Contribution No. 6: pp. 1-78 (with A. B. Elsasser).

Big Game Hunters in the Great Basin: A Critical Review of the Evidence. Berkeley: University of California Archaeological Research Facility Contribution No. 7:1-12 (with M. A. Baumhoff).

Radiocarbon Age of the Gypsum Cave Culture. Berkeley: University of California Archaeological Research Facility Contribution No. 7:13-18 (with R. Berger).

An Assessment of Radiocarbon Dates for the Rose Spring Site (CA-Iny-372), Inyo County, California. Berkeley: University of California Archaeological Research Facility Contribution No. 7:19-27 (with C. Clewlow and R. Berger).

A Mescal Knife from Near Overton, Moapa Valley, Southern Nevada. Berkeley: University of California Archaeological Research Facility Contribution No. 7:55-63.

An Ethnographic Sketch of the Paviotso in 1882. Berkeley: University of California Archaeological Research Facility Contribution No. 7:55-63.

Magnetometer Survey of the La Venta Pyramid. Berkeley: University of California Archaeological Research Facility Contribution No. 8:1-20 (with F. Morrison and C. Clewlow).

Archaeological Investigations in Lovelock Cave, Nevada. Berkeley: University of California Archaeological Research Facility Contribution No. 10:1-86 (with L. K. Napton).

Analysis of Human Coprolites from Archaeological Contexts with Primary Reference to Lovelock Cave, Nevada. Berkeley: University of California Archaeological Research Facility Contribution No. 10:87-103 (with L. K. Napton).

Correspondence Concerning the Lovelock Cave Investigations by the University of California in 1912 and 1924, and Preparation of L. L. Loud's Report. Berkeley: University of California Archaeological Research Facility Contribution No. 10: 131-162 (with L. K. Napton).

Lovelock Cave Bibliography. Berkeley: University of California Archaeological Research Facility Contribution No. 10:198-202 (with L. K. Napton).

Vestigios de artefactos Mesoamericanos. Instituto Nacional de Antropología e Historia, Boletín No. 40, pp. 51-55, (June) (with F. Stross and J. A. Graham).

Continuity of Indian Population in California from 1770-1848 to 1955. Berkeley: University of California Archaeological Research Facility Contribution No. 9:1-22 (with A. L. Kroeber).

A Chumash "Census" of 1928-1930. Berkeley: University of California Archaeological Research Facility Contribution No. 9:23-28.

More J. P. Harrington Notes on Ventureño Chumash Basketry and Culture. Berkeley: University of California Archaeological Research Facility Contribution No. 9:59-78.

Names and Locations of Some Ethnographic Patwin and Maidu Villages. Berkeley: University of California Archaeological Research Facility Contribution No. 9:79-118 (with T. R. Hester).

Shasta Villages and Territory. Berkeley: University of California Archaeological Research Facility Contribution No. 9:119-158 (with T. R. Hester).

1971

The Western Coast of North America. In: The California Indians, R. F. Heizer and M. A. Whipple, eds., pp. 131-143. Berkeley: University of California Press.

Speculations on the Prehistory of Northwestern California. In: The California Indians, R. F. Heizer and M. A. Whipple, eds., pp. 225-230. Berkeley: University of California Press (with A. E. Elsasser).

Mines and Quarries of the Indians of California. In: The California Indians, R. F. Heizer and M. A. Whipple, eds., pp. 346-359. Berkeley: University of California Press (with A. E. Treganza).

Aboriginal California and Great Basin Cartography. In: The California Indians, R. F. Heizer and M. A. Whipple, eds., pp. 459-563. Berkeley: University of California Press.

Village Shifts and Tribal Spreads in California Prehistory. In: The California Indians, R. F. Heizer and M. A. Whipple, eds., pp. 480-484. Berkeley: University of California Press.

Number and Condition of California Indians Today. In: The California Indians, R. F. Heizer and M. A. Whipple, eds., pp. 572-581. Berkeley: University of California Press.

[Co-editor of] Observations on the Emergence of Civilization in Mesoamerica. Berkeley: University of California Archaeological Research Facility Contribution No. 11:1-251 (with J. A. Graham).

[Commentary on] The Olmec Region—Oaxaca. Berkeley: University of California Archaeological Research Facility Contribution No. 11:51-69.

Two Ethnographic Chumash Stone-weighted Digging Sticks. *The Masterkey* 45:64-68.

The Obsidian of Tres Zapotes. Berkeley: University of California Archaeological Research Facility Contribution No. 13:65-113 (with T. R. Hester and R. N. Jack).

Technology and Geologic Sources of Obsidian from Cerro de las Mesas, Veracruz, Mexico, with Observations on Olmec Trade. Berkeley: University of California Archaeological Research Facility Contribution No. 13:133-143 (with T. R. Hester and R. N. Jack).

Physical Capabilities of the California Indians. *The Masterkey* 45:109-112.

[Editor of] Census of Non-reservation California Indians, 1905-1906, by C. E. Kelsey. Berkeley: University of California Archaeological Research Facility, 118 pp.

Possible Ballcourt at La Venta, Mexico. *Nature* 232:650 (with L. W. Wyshack, R. Berger, and J. A. Graham).

Prehistoric Cultures of Kodiak Island. In: *Encyclopedia Arctica*, V. Stefansson, ed. Published on microfilm by Dartmouth College Library 8 pp.

Replicative Experiments in Archaeology. *Studia Ethnographica et Folkloristica in Honorem Bela Gunda*, pp. 175-181. Debrecen, Hungary (with J. A. Graham).

An Evaluation of X-ray Fluorescence Analysis as a Method for Correlating Obsidian Artifacts with Source Location. *Archaeometry* 13:17-26 (with D. P. Stevenson and F. H. Stross).

1972

A Bibliography of Replicative Experiments in Archaeology. Berkeley: University of California Archaeological Research Facility, 26 pp. (with T. R. Hester and J. A. Graham).

Problems in the Functional Interpretation of Artifacts: Scraper Planes from Mitla and Yagul. Oaxaca. Berkeley: University of California Archaeological Research Facility Contribution No. 14:107-123 (with T. R. Hester).

Mines and Quarries of the Indians of California. Ramona, California: Ballena Press, 67 pp. (with A. E. Treganza).

Research on Olmec Cultural Materials in Mexico City. National Geographic Society Research Reports for 1955-1960:91-92.

Archaeological Investigations at Cuicuilco, Mexico, 1957. National Geographic Society Research Reports for 1955-1960: 93-104 (with J. A. Bennyhoff).

An Unusual Olmec Figurine. *The Masterkey* 46: 71-74.

[Editor of] *The Luiseño Creation Myth*, by H. W. Henshaw. *The Masterkey* 46:93-100.

The Eighteen Unratified Treaties of 1851-1852 Between the California Indians and the United States Government. Berkeley: University of California Archaeological Research Facility, 101 pp.

George Gibbs' Journal of Redick McKee's Expedition Through Northwestern California in 1851. Berkeley: University of California Archaeological Research Facility, 88 pp.

Check List and Index to Reports of the University of California Archaeological Survey Nos. 32 (1955) to 74 (1968); checklist of Contributions of the Archaeological Research Facility of the Department of Anthropology, Nos. 1 (1965) to 14 (1972); other information on activities of the Survey and Facility, 1948-1972. Berkeley: University of California Archaeological Survey Report No. 75:1-80. (Reprinted with additions, 1976.)

California's Oldest Historical Relic? Berkeley: University of California Lowie Museum of Anthropology, 73 pp.

Notes on Northern Paiute Ethnography: Kroeber and Marsden Records. Berkeley: University of California Archaeological Research Facility, 58 pp. (with T. R. Hester and M. P. Nichols).

Geologic Sources of Archaeological Obsidian from Sites in Northern and Central Veracruz, Mexico. Berkeley: University of California Archaeological Research Facility Contribution No. 16:117-122 (with T. R. Hester and R. Jack).

Trace Element Analysis of Obsidian from the Site of Cholula, Mexico. Berkeley: University of California Archaeological Research Facility Contribution No. 16:105-110 (with R. Jack and T. R. Hester).

1973

Original Accounts of the Lone Woman of San Nicolas Island. Ramona, California: Ballena Press, 46 pp. (with A. B. Elsasser).

[Editor and annotator of] *Observations on the Indians of the Klamath River and Humboldt Bay, Accompanying Vocabularies of Their Languages* (by George Gibbs). Berkeley: University of California Archaeological Research Facility, 23 pp.

[Preface to] *Basket Designs of the Mission Indians of California*, by A. L. Kroeber. Ramona, California: Ballena Press.

Collected Documents on the Causes and Events in the Bloody Island Massacre of 1850. Berkeley: University of California Archaeological Research Facility, 78 pp.

Reprints of Various Papers on California Archaeology, Ethnology, and Indian History. Berkeley: University of California Archaeological Research Facility, 139 pp.

A Probable Relic of Juan Rodriguez Cabrillo. The Masterkey 47:62-68.

Bibliography of Archaeology; I: Experiments, Lithic Technology, and Petrography. Addison-Wesley Module in Anthropology No. 29, 56 pp. (with T. R. Hester).

Review and Discussion of Great Basin Projectile Points: Forms and Chronology. Berkeley: University of California Archaeological Research Facility, 38 pp. (with T. R. Hester).

Archaeology of Bamert Cave (Ama-1), Amador County, California. Berkeley: University of California Archaeological Research Facility, 87 pp. (with T. R. Hester and others).

Livingston Stone's Ethnographic Notes on the McCloud River Wintu, and Selected Numbers of Alexander S. Taylor's Indianology of California. Berkeley: University of California Archaeological Research Facility, 60 pp.

Arrow Points or Knives? Comments on the Proposed Function of "Stockton Points." American Antiquity 38:220-221 (with T. Hester).

New Light on the Colossi of Memnon. The Masterkey 47:94-105 (with F. Stross and T. Hester). (Also published in Vortex, California Section of American Chemical Society 34:214, 216; 35:9-11, 32-33.)

An Unusual Olmec Figurine. Berkeley: University of California Archaeological Research Facility Contribution No. 18:199-201.

The Human Sources of California Ethnography. Berkeley: University of California Archaeological Research Facility, 46 pp. (with K. Nissen).

The Colossi of Memnon Revisited. Science 182: 1219-1225 (with F. Stross, T. R. Hester, A. Albee, I. Perlman, F. Asaro, and H. Bowman).

A Bibliography of California Indian History. Berkeley: University of California Archaeological Research Facility, 52 pp. (with K. Nissen and E. Castillo).

[Preface to] Boundary Descriptions of California Indian Stocks and Tribes, by C. Hart Merriam and Z. M. Talbot, pp. i-vii. Berkeley: University of California Archaeological Research Facility.

1974

An Early Cahuilla Ethnographic Sketch. The Masterkey 48:14-21.

Obituary of William C. Massey. American Indian Quarterly 1:267-268.

Studying the Windmill Culture. In: Archaeological Researches in Retrospect, G. R. Willey, ed., pp. 179-206. Cambridge, Massachusetts: Winthrop Publishers.

Were the Chumash Whale Hunters? Implications for Ethnography in 1974. Journal of California Anthropology 1:26-32.

Decorated Stone Discs from the Lower Humboldt Valley, Nevada. Berkeley: University of California Archaeological Research Facility Contribution No. 21:65-70.

They Were Only Diggers. Ballena Press Publications in Archaeology, Ethnology and History No. 1, 126 pp.

[Editor of] Ethnographic Observations on the Coast Miwok and Pomo by Contre-Admiral F. P. von Wrangell and P. Kostromitonov of the Russian Colony Ross, 1839. Berkeley: University of California Archaeological Research Facility 20 pp.

Two Petroglyph Sites in Lincoln County, Nevada. Berkeley: University of California Archaeological Research Facility Contribution No. 20:1-52 (with T. R. Hester).

An Attempt at Computer Analysis Determination of California Rock Art Styles. Berkeley: University of California Archaeological Research Facility Contribution No. 20:103-130 (with M. Pori).

Charcoal Collecting at La Venta for Radiocarbon Dating. National Geographic Society Research Reports, 1967 Projects: 149-152 (with P. Drucker).

Olmec Colossal Stone Heads, Mexico. National Geographic Society Research Reports, 1967 Projects: 153-158 (with J. Graham).

Indians of California: A Collection of Maps on Tribal Distribution. In: California Indians, II: 1-95. New York: Garland Publishing Co.

The Discovery of What May be Cabrillo's Gravestone. In: Cabrillo Gravestone Seminar. First Annual Cabrillo Festival Historical Seminar 1(1): 1-10. San Diego.

Observations on the Physical Strength of Some Western Indians and "Old American" Whites. Berkeley: University of California Archaeological Research Facility Contribution No. 22:47-57 (with C. Treanor).

Microblade Technology in the Channel Islands. *The Masterkey* 48:124-135 (with J. M. Pitzer and T. R. Hester).

Fishermen and Foragers of the West. In: *The World of the American Indian*, pp. 202-253. Washington: National Geographic Society (reprinted with revisions, 1979).

Some Thoughts on Hoaxes and Fakes. *Bulletin of the Texas Archeological Society* 45:141-196.

A Question of Ethics in Archaeology—One Archaeologist's View. *Journal of California Anthropology* 1:145-151.

1975

Stephen Powers as Ethnologist. In: *California Indian Characteristics*, by Stephen Powers, pp. 39-56. Berkeley: Friends of the Bancroft Library Keepsake No. 23.

[Editor and annotator of] *The Northern California Indians*, by Stephen Powers. Berkeley: University of California Archaeological Research Facility Contribution No. 25, 221 pp.

Counterfeiters and Shell Currency Manipulators Among California Indians. *Journal of California Anthropology* 2:108-110.

Some Thoughts on California Archaeology at the Moment. *Journal of New World Archaeology* 1: 1-13.

Archaeological Investigation of the Site of La Venta, Tabasco, Mexico. *National Geographic Society Research Reports, 1890-1954 Projects: 387-394* (with P. Drucker).

[Editor of] *Chumash Place Name Lists*. Berkeley: University of California Archaeological Research Facility, 85 pp.

California Indian History: a Classified and Annotated Guide to Source Materials. Ballena Press Publications in Archaeology, Ethnology, and History No. 4, 90 pp. (with K. M. Nissen and E. D. Castillo).

[Editor of] *Narrative of the Adventures and Sufferings of John R. Jewitt While Held as Captive of the Nootka Indians of Vancouver Island, 1803-1805*. Ballena Press Publications in Archaeology, Ethnology, and History No. 5, 111 pp.

[Editor of] *Seven Early Accounts of the Pomo Indians and Their Culture*. Berkeley: University of California Archaeological Research Facility, 63 pp.

1976

[Editor's Introduction and Editor of] *Letters of Stephen Powers to John Wesley Powell Concerning Tribes of California*. Berkeley: University of California Archaeological Research Facility Contribution No. 28:ii; 45-94.

A Note on Harrington and Kroeber. *Journal of California Anthropology* 2:233-234.

An Olmec Sculpture from the South (Pacific) Coast of Guatemala. *Journal of New World Archaeology* 1(3) (with E. M. Shook).

A Note on Boscana's Posthumous *Relación*. *The Masterkey* 50:99-102.

Felsbilder der Steinzeit. *Bild der Wissenschaft*, heft 2, 13 jahrgang, pp. 48-53 (with C. Clewlow and A. Oskin).

La Venta: Cradle of Mesoamerican Civilization. *Texas Archaeological Society Bulletin* 47:1-23.

[Editor of] *A Collection of Ethnographical Articles on the California Indians*. Ballena Press Publications in Archaeology, Ethnology, and History No. 7, 103 pp.

The Indians of California: a Critical Bibliography. Newberry Library Center for the History of the American Indian, Bibliographical Series, 68 pp.

Chemical and Archaeological Studies of Mesoamerican Obsidians. In: *Advances in Obsidian Glass Studies*, R. E. Taylor, ed., pp. 240-258. Park Ridge: Noyes Press (with T. Hester, R. Jack, and F. Stross).

[Foreword to] S. F. Cook, *The Conflict Between the California Indian and White Civilization*, pp. ix-xi. Berkeley: University of California Press (with W. Borah).

For Sale: California at 47 Cents Per Acre. *Journal of California Anthropology* 3(2):38-65 (with A. L. Kroeber).

[Editor of] C. Hart Merriam: *Ethnographic and Ethnosynonymic Data from Northern California Tribes*. Contributions to Native California Ethnology from the C. Hart Merriam Collection, Number 1. Berkeley: University of California Archaeological Research Facility, 142 pp.

Unifacial Cobble Tools from the Northwest California Coast: Experimental and Wear Pattern Notes. Berkeley: University of California Archaeological Research Facility Contribution No. 33: 25-35 (with T. Hester and E. Wuertele).

1977

Biographical Sketch of Alfred L. Kroeber. In: *Encyclopedic Biographical Dictionary*. Casa Editrice UNEDI, Spa, Milano, (pp. 203-204).

Ritual Management of Salmonid Fish Resources in California. *Journal of California Anthropology* 4:6-29 (with S. L. Swezey).

Some Chumash Pieces in the Cessac Collection. *The Masterkey* 51:73-78.

Prehistoric Rock Art of Nevada and California. *Jahrbuch für Prahistorische und Ethnographische Kunst*, band 24, 1974-1979, pp. 148-156 (with K. Nissen).

[Editor of] C. Hart Merriam: *Ethnographic and Ethnosynonymic Data from Central California Indian Tribes*. Contribution to Native California Ethnology from the C. Hart Merriam Collection, Number 2. Berkeley: University of California Archaeological Research Facility, 205 pp.

1978

Magnetometer Survey of the La Venta Pyramid. *National Geographic Society Research Reports, 1969 Projects*: 243-245.

Great Basin. In: *Chronologies in New World Archaeology*, R. E. Taylor and C. W. Meighan, eds., pp. 147-199. New York: Academic Press (with T. Hester).

Perspectives on the Dating of Prehistoric Great Basin Petroglyphs by Neutron Activation Analysis. *Archaeometry* 20(1):85-88 (with J. C. Bard and F. Asaro).

Abaj Takalik, 1976: *Exploratory Investigations*. Berkeley: University of California Archaeological Research Facility Contribution No. 36:85-109 (with J. A. Graham and E. M. Shook).

Man the Hunter-Gatherer: Food Availability Versus Biological Factors. In: *Progress in Human Nutrition*, Vol. 2, S. Margen and R. Ogar, eds., pp. 10-23. Westport, Conn.: Avi Publishing Co.

Treaties. In: *Handbook of North American Indians*, Vol. 8, California, R. F. Heizer, ed., pp. 701-704. Washington: Smithsonian Institution.

Treaty Making and Treaty Rejection by the Federal Government in California, 1850-1852. *Ballena Press Publications in Archaeology, Ethnology, and History*, No. 9, 130 pp.

The California Indians vs. the United States of America (HR 4497). *Ballena Press Publications in Archaeology, Ethnology, and History*, No. 12, 130 pp.

Great Basin Projectile Points: Forms and Chronology. *Ballena Press Publications in Archaeology, Ethnology, and History*, No. 10, 43 pp. (with T. R. Hester).

Natural Forces and Native World View. In: *Handbook of North American Indians*, Vol. 8, California, R. F. Heizer, ed., pp. 649-653. Washington: Smithsonian Institution.

Migrazioni e Popolamento del Nuovo Mondo. *Alto Orinoco, Indios e Ambiente. Esplorazioni e Ricerche*, Vol. III, pp. 77-90. Venice: Erizio Editrice (in Italian) (with T. R. Hester).

The Steroids of 2000-year-old Human Coprolites. *The Journal of Lipid Research* 19:215-221 (with D. S. Lin, W. E. Connor, and L. K. Napton).

Two Petroglyph Sites in Lincoln County, Nevada. *Ballena Press Publications on North American Rock Art*, No. 1, pp. 1-44 (with T. R. Hester). (Reprinted from *Archaeological Research Facility Contribution No. 20*, 1974.)

History of Research. In: *Handbook of North American Indians*, Vol. 8, California, R. F. Heizer, ed., pp. 6-15. Washington: Smithsonian Institution.

Trade and Trails. In: *Handbook of North American Indians*, Vol. 8, California, R. F. Heizer, ed., pp. 690-693. Washington: Smithsonian Institution.

Introduction. In: Handbook of North American Indians, Vol. 8, California, R. F. Heizer, ed., pp. 1-6. Washington: Smithsonian Institution.

Mythology: Regional Patterns and History of Research. In: Handbook of North American Indians, Vol. 8, California, R. F. Heizer, ed., pp. 654-657. Washington: Smithsonian Institution.

Obsidian Artifacts from the Site of Papalhuapa, Guatemala. In: Archaeological Studies of Mesoamerican Obsidian, T. R. Hester, ed., pp. 112-124. Ballena Press Studies in Mesoamerican Art, Archaeology, and Ethnohistory No. 3 (with J. A. Graham).

An Introductory Bibliography for Mesoamerican Obsidian Studies. In: Archaeological Studies of Mesoamerican Obsidian, T. R. Hester, ed., pp. 200-210. Ballena Press Studies in Mesoamerican Art, Archaeology, and Ethnohistory No. 3 (with T. R. Hester).

Impact of Colonization on the Native California Societies. *Journal of San Diego History* 24:121-139.

1979

[Editor of] Indian Names for Plants and Animals among Californian and other Western North American Tribes, by C. H. Merriam. Ballena Press Publications in Archaeology, Ethnology, and History No. 14.

[Editor of] Federal Concern about Conditions of California Indians, 1853-1913: Eight Documents. Ballena Press Publications in Archaeology, Ethnology, and History No. 13.

The Altithermal Revisited: Pollen Evidence from the Leonard Rockshelter. *Journal of California and Great Basin Anthropology* 1:280-294 (with R. Byrne and C. Busby).

Colha, Belize: A Preliminary Statement on the 1979 Season. In: The Colha Project 1979: A Collection of Interim Papers, T. R. Hester, ed., pp. 1-8. San Antonio: University of Texas at San Antonio Center for Archaeological Research (with T. R. Hester *et al.*).

Colha, Belize: A Preliminary Statement on the 1979 Season. *Journal of Belizean Studies* (Belize City) (MS 1979, in press) (with T. R. Hester *et al.*).

Colha, Belize: Preliminary Comments on the 1979 Season. In: *Ceramica de Cultura Maya*. Philadelphia: Temple University (MS 1979, in press) (with T. R. Hester *et al.*).

Scheduled for 1980

Making Stone Vases: An Ethnoarchaeological Study of Contemporary Alabaster Workshops in Upper Egypt (chapter for book edited by R. Gould and M. Schiffer; and monograph submitted for publication) (with T. R. Hester).

II. REVIEWS

1938

L. S. Cressman, Petroglyphs of Oregon. *American Anthropologist* 40:122-123.

1941

D. B. Rogers, Prehistoric Man of the Santa Barbara Coast. *American Antiquity* 6:372-375.

1944

P. C. Orr, Archaeology of Mescalitan Island and Customs of Chumash. *American Anthropologist* 46:392-394.

1948

I. Kelly, Excavations at Culiacán, Sonora, and the Archaeology of the Antlan-Tuxacuesco Area of Jalisco. *Acta Americana* 5:133-135.

E. Gudde, 1000 California Place Names; P. Hanna, The Dictionary of California Land Names. *Journal of American Folklore* 61:406-407.

1950

H. Larson and F. Rainey, Ipiutak and the Arctic Whale Hunting Culture. *American Anthropologist* 52:262-265.

J. G. Bruff, Gold Rush. *American Anthropologist* 52:271.

E. G. Gudde, California Place Names. *Journal of American Folklore* 63:121-122.

A. Joseph, R. B. Spicer, and J. Chesky, The Desert People. *American Journal of Psychiatry* 107:316-317.

1952

F. E. Zuener, Dating the Past. *American Anthropologist* 54:106.

F. L. Bailey, Some Sex Beliefs and Practices in a Navaho Community. *American Journal of Psychiatry* 108:719-720.

F. C. Hibben, Treasure in the Dust. *Pacific Historical Review* 21:159-160.

G. W. Harley, Masks as Agents of Social Control in Northeast Liberia. *American Journal of Psychiatry* 108:870.

G. R. Willey, Archaeology of the Florida Gulf Coast. *Boletín Bibliográfico de Antropología Americana* 14:102-108.

E. F. Greenman, Old Birch Island Cemetery and the Early Historic Trade Route, Georgian Bay, Ontario. *Boletín Bibliográfico de Antropología Americana* 14:59.

J. A. Ford, A Troyville-Coles Creek Period Site in Avoyelles Parish, Louisiana. *Boletín Bibliográfico de Antropología Americana* 14:57-58.

1953

J. W. Caughey, The Indians of California in 1852. *American Anthropologist* 55:441.

1954

H. S. Colton, Field Methods in Archaeology. *American Antiquity* 20:189.

O. G. S. Crawford, Archaeology in the Field. *American Anthropologist* 56:321-322.

1955

N. Morss, Clay Figurines of the American Southwest. *American Antiquity* 21:194.

1956

W. F. Libby, Radiocarbon Dating (2nd ed., 1955). *American Anthropologist* 58:394-395.

T. L. Smiley, ed., Geochronology. *American Antiquity* 21:425.

F. Wendorf, A. D. Krieger, and C. Albritton, The Midland Discovery. *American Journal of Physical Anthropology* 14:126-128.

1957

F. de Laguna, Chugach Prehistory: The Archaeology of Prince William Sound, Alaska. *American Anthropologist* 59:370-371.

Luis Sales, Observations on California, 1772-1790. *American Anthropologist* 59:725-726.

I. Sanderson, Follow the Whale. *American Anthropologist* 59:909-910.

1958

J. D. Jennings, Danger Cave. *American Journal of Archaeology* 62:358-359.

J. D. Jennings, Danger Cave. *American Anthropologist* 60:979-980.

M. Covarrubias, Indian Art of Mexico and Central America. *American Antiquity* 24:201-202.

1959

H. B. Hawthorn, C. S. Belshaw, and S. M. Jamieson, The Indians of British Columbia. *Pacific Historical Review* 28:89-91.

J. A. Ford, Eskimo Prehistory in the Vicinity of Point Barrow, Alaska. *Science* 130:1246-1247.

1960

(Multiple authors), Evolution and Anthropology: A Centennial Appraisal. *American Antiquity* 25:611-612.

1961

B. Durham, Canoes and Kayaks of Western North America. *American Anthropologist* 63:1377.

1962

M. J. Aitken, Physics and Archaeology. *American Antiquity* 27:428-429.

L. B. Simpson, Laws of Burgos, 1512-1513, and D. C. Cutter, Malaspina in California. *American Anthropologist* 64:196-197.

R. S. MacNeish, First Annual Report of the Tehuacán Archaeological Botanical Project. *American Antiquity* 28:119.

1964

D. Brothwell and E. Higgs, eds., Science in Archaeology. *American Anthropologist* 66:703-706.

J. D. Holmquist and A. H. Wheeler, Diving into the Past. *American Anthropologist* 67:163-164.

1965

K. W. Butzer, Environment and Archaeology: an Introduction to Pleistocene Geography. *Science* 148: 487-488.

1966

- B. Kummel and D. Raup, Handbook of Paleontological Techniques. *American Antiquity* 31:451.
- S. Gorenstein, Introduction to Archaeology. *American Anthropologist* 68:1080-1081.

1968

- F. Kirkland and W. W. Newcomb, Rock Art of Texas Indians. *American Antiquity* 33:262.

1970

- J. R. Moriarty, Chinigchinix. *California Historical Quarterly* 49:360.

1976

- I. Sutton, Indian Land Tenure: Bibliographical Essays and a Guide to the Literature. *Journal of California Anthropology* 3(1):149.
- G. P. Murdock and T. J. O'Leary, Ethnographic Bibliography of North America. *Journal of California Anthropology* 3(2):98-99.
- D. A. Horr, comp. and ed., American Indian Ethnohistory: California and Great Basin-Plateau Indians. *Journal of California Anthropology* 3(2):94-95.

1977

- L. S. Cressman, Prehistory of the Far West: Homes of Vanished Peoples. *Journal of California Anthropology* 4:324.
- T. C. Blackburn, December's Child: A Book of Chumash Oral Narratives, and A. L. Kroeber, Yurok Myths. *The American West* 19(5):58.
- C. C. DiPeso, Casas Grandes: A Fallen Trading Center of the Gran Chichimeca. *American Indian Quarterly* 3:169-170.
- A. I. Hallowell, Contributions to Anthropology: Selected Papers of A. Irving Hallowell. *American Indian Quarterly* 3:260-261.

1978

- R. B. Stratton, Life Among the Indians: being an interesting narrative of the captivity of the Oatman girls among the Apache and Mohave Indians. *Journal of California Anthropology* 5:133-134.

1978

- T. Hudson, J. Timbrook, and M. Rempe, eds., Tomol: Chumash Watercraft as Described in the Ethnographic Notes of John P. Harrington. *Journal of California Anthropology* 5:125-126.

1979

- F. F. Latta, Handbook of Yokuts Indians, 2nd ed. *California Journal of Anthropology* 5:302-303.

III. BOOKS

1947

- Francis Drake and the California Indians, 1579. Berkeley: University of California Press, 51 pp.

1949

- A Manual of Archaeological Field Methods. Milbrae, California: The National Press. 1st rev. ed., 1950; 2nd rev. ed., 1953; 3rd rev. ed., 1958, with new title: A Guide to Archaeological Field Methods, 162 pp.

1951

- [Editor of] The California Indians. Berkeley: University of California Press, 487 pp., (with M. A. Whipple).

1952

- [Editor of] The Four Ages of Tsurai. Berkeley: University of California Press, 207 pp. (with J. E. Mills).

1959

- [Editor of] The Archaeologist at Work. New York: Harper and Bros., 520 pp. (Reprinted 1967, 1975.)

1962

- Prehistoric Rock Art of Nevada and Eastern California. Berkeley: University of California Press, 412 pp. (with M. A. Baumhoff).
- [Editor of] Man's Discovery of His Past. Spectrum Books No. S-46. Prentice-Hall, Inc., 179 pp.

1965

- An Introduction to Prehistoric Archaeology, 306 pp. New York: Holt, Rinehart Winston (with F. Hole). (Spanish translation issued 1977 by Fondo de Cultura Económica: México, Madrid, Buenos Aires.)

1966

Languages, Territories and Names of California Indian Tribes. Berkeley: University of California Press, 62 pp., 2 folding maps.

1967

Anza and the Northwest Frontier of New Spain. Southwest Museum Papers No. 20, 182 pp. (with J. N. Bowman).

To Make My Name Good: A Reexamination of the Southern Kwakiutl Potlach. Berkeley: University of California Press, 160 pp. (with P. Drucker).

A Guide to Field Methods in Archaeology: Approaches to the Anthropology of the Dead. Palo Alto: National Press, 274 pp. (with J. A. Graham).

1968

The Indians of Los Angeles County: Hugo Reid's Letters of 1852. Los Angeles: Southwest Museum, 142 pp.

Almost Ancestors: The First Californians. San Francisco: Sierra Club, 168 pp. (with T. Kroeber).

1971

The Other Californians: Prejudice and Discrimination under Spain, Mexico and the United States to 1920. Berkeley: University of California Press, 278 pp. (with A. J. Almquist). First paperback reprinting by University of California Press, 1977.

[Editor of] The California Indians: a Sourcebook (second edition). Berkeley: University of California Press, 619 pp. (with M. A. Whipple).

1973

An Introduction to Prehistoric Archaeology (third edition). New York: Holt, Rinehart and Winston, 574 pp. (with Frank Hole).

Prehistoric Rock Art of California. 2 vols. Ramona, California: Ballena Press, Vol. I, 149 pp., 23 pls.; Vol. II, 384 figs. (with C. W. Clewlow).

1974

The Destruction of California Indians. Salt Lake City and Santa Barbara: Peregrine-Smith, 321 pp. Elizabethan California. Ramona, California: Ballena Press, 101 pp.

1975

The Costanoan Indians. De Anza College, California History Center, Local History Studies Vol. 18, 112 pp.

Field Methods in Archaeology, sixth edition. Palo Alto: Mayfield Publishing Co., 408 pp. (with T. R. Hester and J. A. Graham).

1977

Drawn from Life: California Indians in Pen and Brush. Socorro: Ballena Press, 295 pp. (with A. B. Elsasser and T. Kroeber).

A Bibliography of California Indians: Archaeology, Ethnography, Indian History. New York: Garland Publishing, Inc., 267 pp. (with A. B. Elsasser).

Prehistoric Archeology: A Brief Introduction. New York: Holt, Rinehart Winston, Inc., 477 pp. (with F. Hole).

1978

[Editor of] Handbook of North American Indians, Vol. 8, California. Washington: Smithsonian Institution, 800 pp.

1979

Ishi, the Last Yahi: A Documentary History. University of California Press (with T. Kroeber).

Scheduled for 1980

A Guide to Basic Archaeological Literature. New York: Garland Publishing Co. (with T. R. Hester).

[Coeditor with T. R. Hester of] Nine Papers on Great Basin Archaeology. Socorro, New Mexico: Ballena Press.

The Natural World of the California Indians. Berkeley: University of California Press (with A. B. Elsasser).

IV. FILMS**1952**

Training Film for Recovery of War Dead. Made under contract with Research and Development Branch, Office of OM. General contract number DA 44-109-qm-620. Thirty minutes, black and white.

1963

The Excavations at La Venta. Twenty-nine minute sound-color film of the 1955 excavations of the site of La Venta, Tabasco. Produced by Motion Picture Production Department, University Extension, University of California, funds provided by National Science Foundation, Course Content Improvement Section, Grant No. G25205.

* * *

In addition to the works listed above, there are a number of prefaces and introductions to the various volumes in the *Reports* of the University of California Archaeological Survey and the *Contributions* of the University of California Archaeological Research Facility that were authored by R. F. Heizer. Brevity precludes a listing of these. In addition, there are several volumes in the above series, including *Contribution* No. 32 ("Author and Title Index, University of California Publications in American Archaeology and Ethnology, Vols. 1-50, 1903-1964" [1976], that he apparently assembled, although no by-line appears in them. And doubtless this listing is incomplete in terms of standard articles and reports, but for the time being, it will have to do.

At the time of his death, Heizer was working on a number of papers and monographs. Some of these were essentially completed manuscripts; others are more properly called working files than manuscripts. Those papers accepted for publication (so far as we have been able to determine) are listed above; other manuscripts and working files have been turned over to his students for completion. Since these constitute a significant body of research, which we hope will ultimately see the light of day, and since other researchers may be interested in these projects, they are listed briefly here.

Colin Busby is completing "The Rock Art of Lincoln County, Nevada" (which he jointly authored with Heizer), "Some Prehistoric

Stone Sculptures from Western Nevada," "The British Crown Inspects California: Vancouver's Visits of 1792 and 1793, as Reported in the Journal of Archibald Menzies," "Anthropologists at Work at the Opening of the Twentieth Century," "The Archaeology of Hidden Cave, Churchill County, Nevada" by N. Roust and G. Grosscup (co-edited with C. Busby), and an as yet untitled comparative study of tule duck decoys from the American West and from the vicinity of Venice, Italy.

Karen Nissen is currently in possession of working files entitled "When was the Ethnographic Present?" and "Early Descriptions of Rock Art in Western United States."

T. R. Hester is completing a monumental work on "Ancient Heavy Transport," which Heizer had been preparing for many years. (In a recent letter, Hester indicated that he thought Heizer would be amused if he were around to realize that moving all the materials for this volume to the University of Texas, San Antonio, had turned out to be such a task in "heavy transport—14 large boxes; 500 pounds.") There is also a paper jointly authored by Hester and Heizer on basic field methods that is scheduled to appear in Vol. 1 of the *Handbook of North American Indians*.

Sean Swezey has assumed responsibility for completion of two projects that are in the manuscript stage. One of these is a biography of Lorenzo Gordon Yates and an edited presentation of Yates' papers on various ethnological subjects. The other is a short biography of Felipe Arroyo de la Cuesta, together with an edited version of his ethnological and linguistic notes on Native Californians in the vicinity of Missions San Juan Bautista and San Luis Obispo.

Martin Baumhoff is currently editing three volumes of collected works of R. F. Heizer for publication through the Ballena Press. These should appear starting in 1980. *Almost Ancestors: The First Californians* (with T. Kroeber; Sierra Club, 1968) will be repub-

lished by the Friends of the Earth, and the University of California Press intends to republish *Drawn from Life: California Indians in Pen and Brush* (with T. Kroeber and A. Elsasser; Ballena Press, 1977).

Most of Heizer's papers have been deposited in the Bancroft Library, University of California, Berkeley. His library is now housed at the California Academy of Sciences, San

Francisco, and his extensive notes and records on rock art of western North America are housed at the Rock Art Archive, Institute of Archaeology, University of California, Los Angeles.

T. R. Hester has generously offered to update Heizer's bibliography at an appropriate time in the future.

Editor

